

## Product datasheet for **TA800069BM**

### CRABP2 Mouse Monoclonal Antibody (HRP conjugated) [Clone ID: OTI10D6]

#### Product data:

|                         |   |
|-------------------------|---|
| Product Type:           | Primary Antibodies  |
| Clone Name:             | OTI10D6   |
| Applications:           | FC, IHC, WB   |
| Recommended Dilution:   | WB 1:500~2000, IHC 1:150, FLOW 1:100  |
| Reactivity:             | Human, Mouse  |
| Host:                   | Mouse   |
| Isotype:                | IgG1  |
| Clonality:              | Monoclonal  |
| Immunogen:              | Full length human recombinant protein of human CRABP2 (NP_001869) produced in E.coli.   |
| Formulation:            | PBS (pH 7.3) containing 1% BSA, 50% glycerol.   |
| Concentration:          | 0.5 mg/ml   |
| Purification:           | Purified from mouse ascites fluids or tissue culture supernatant by affinity chromatography (protein A/G)   |
| Conjugation:            | HRP   |
| Storage:                | Store at -20°C as received.   |
| Stability:              | Stable for 12 months from date of receipt.  |
| Predicted Protein Size: | 15.5 kDa  |
| Gene Name:              | cellular retinoic acid binding protein 2  |
| Database Link:          | <a href="#">NP_001869</a><br><a href="#">Entrez Gene 12904 Mouse</a> <a href="#">Entrez Gene 1382 Human</a><br><a href="#">P29373</a>   |
| Background:             | This gene encodes a member of the retinoic acid (RA, a form of vitamin A) binding protein family and lipocalin/cytosolic fatty-acid binding protein family. The protein is a cytosol-to-nuclear shuttling protein, which facilitates RA binding to its cognate receptor complex and transfer to the nucleus. It is involved in the retinoid signaling pathway, and is associated with increased circulating low-density lipoprotein cholesterol. Alternatively spliced transcript variants encoding the same protein have been found for this gene. |

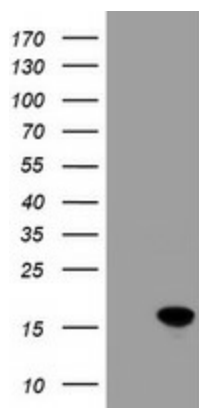


[View online »](#)

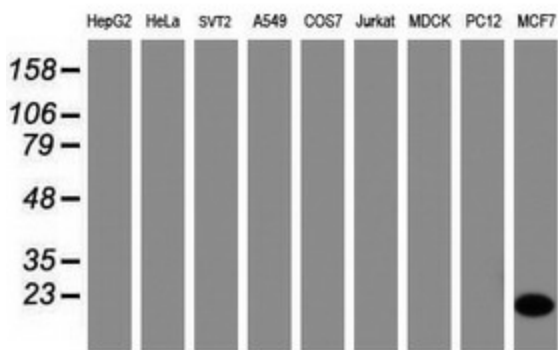
**Synonyms:** CRABP-II; RBP6

**Protein Families:** Druggable Genome, Transcription Factors

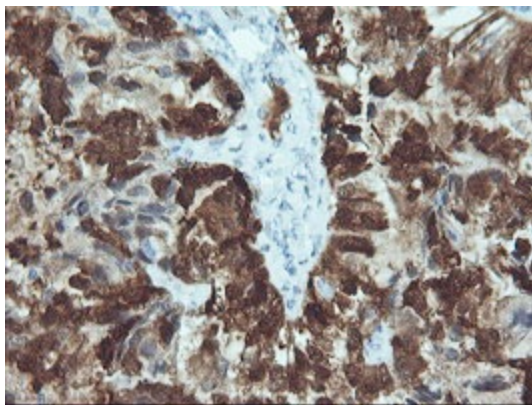
**Product images:**



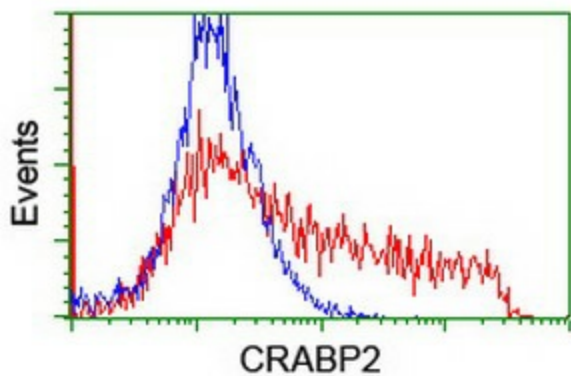
HEK293T cells were transfected with the pCMV6-ENTRY control (Cat# [PS100001], Left lane) or pCMV6-ENTRY CRABP2 (Cat# [RC200221], Right lane) cDNA for 48 hrs and lysed. Equivalent amounts of cell lysates (5 ug per lane) were separated by SDS-PAGE and immunoblotted with anti-CRABP2(Cat# [TA800069]). Positive lysates [LY419677] (100ug) and [LC419677] (20ug) can be purchased separately from OriGene.



Western blot analysis of extracts (35ug) from 9 different cell lines by using anti-CRABP2 monoclonal antibody (HepG2: human; HeLa: human; SVT2: mouse; A549: human; COS7: monkey; Jurkat: human; MDCK: canine; PC12: rat; MCF7: human).



Immunohistochemical staining of paraffin-embedded Adenocarcinoma of Human ovary tissue using anti-CRABP2 mouse monoclonal antibody. (Heat-induced epitope retrieval by 10mM citric buffer, pH6.0, 100°C for 10min, [TA800069])



HEK293T cells transfected with either [RC200221] overexpress plasmid (Red) or empty vector control plasmid (Blue) were immunostained by anti-CRABP2 antibody ([TA800069]), and then analyzed by flow cytometry.