

## Product datasheet for **TA800041S**

### **clAP2 (BIRC3) Mouse Monoclonal Antibody [Clone ID: OTI2B2]**

#### **Product data:**

Product Type:	Primary Antibodies
Clone Name:	OTI2B2
Applications:	WB
Recommended Dilution:	WB 1:2000
Reactivity:	Human
Host:	Mouse
Isotype:	IgG1
Clonality:	Monoclonal
Immunogen:	Human recombinant protein fragment corresponding to amino acids 255-529 of human BIRC3 (NP_001156) produced in E.coli.
Formulation:	PBS (pH 7.3) containing 1% BSA, 50% glycerol and 0.02% sodium azide.
Concentration:	1 mg/ml
Purification:	Purified from mouse ascites fluids or tissue culture supernatant by affinity chromatography (protein A/G)
Conjugation:	Unconjugated
Storage:	Store at -20°C as received.
Stability:	Stable for 12 months from date of receipt.
Predicted Protein Size:	68.2 kDa
Gene Name:	baculoviral IAP repeat containing 3
Database Link:	<a href="#">NP_001156</a> <a href="#">Entrez Gene 330 Human</a> <a href="#">Q13489</a>



[View online »](#)

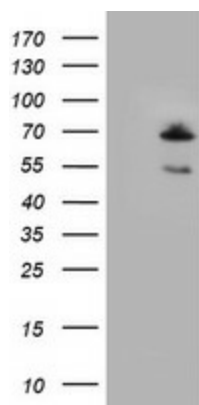
**Background:** The protein encoded by this gene is a member of a family of proteins that inhibits apoptosis by binding to tumor necrosis factor receptor-associated factors TRAF1 and TRAF2, probably by interfering with activation of ICE-like proteases. The encoded protein inhibits apoptosis induced by serum deprivation but does not affect apoptosis resulting from exposure to menadione, a potent inducer of free radicals. The amino acid sequence predicts three baculovirus IAP repeat domains and a ring finger domain. Transcript variants encoding the same isoform have been identified. [provided by RefSeq]

**Synonyms:** AIP1; API2; c-IAP2; CIAP2; HAIP1; HIAP1; MALT2; MIHC; RNF49

**Protein Families:** Druggable Genome

**Protein Pathways:** Apoptosis, Focal adhesion, NOD-like receptor signaling pathway, Pathways in cancer, Small cell lung cancer, Ubiquitin mediated proteolysis

### Product images:



HEK293T cells were transfected with the pCMV6-ENTRY control (Left lane) or pCMV6-ENTRY BIRC3 ([RC207764], Right lane) cDNA for 48 hrs and lysed. Equivalent amounts of cell lysates (5 ug per lane) were separated by SDS-PAGE and immunoblotted with anti-BIRC3. Positive lysates [LY420093] (100ug) and [LC420093] (20ug) can be purchased separately from OriGene.