

## Product datasheet for **TA800034BM**

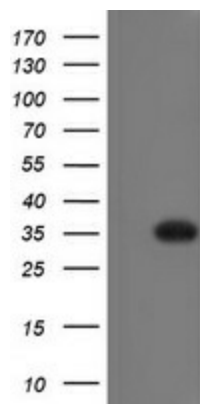
### **RYPB Mouse Monoclonal Antibody (HRP conjugated) [Clone ID: OTI1B6]**

#### **Product data:**

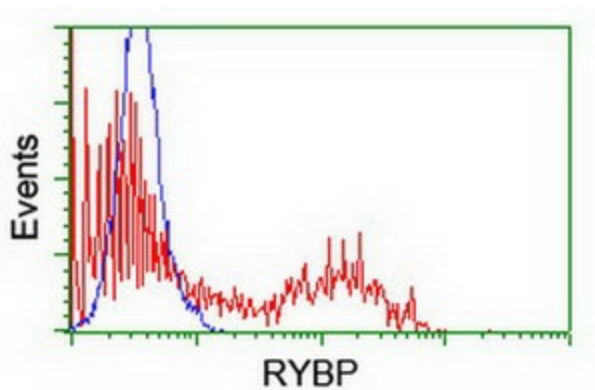
|                         |  |
|-------------------------|--|
| Product Type:           | Primary Antibodies   |
| Clone Name:             | OTI1B6   |
| Applications:           | FC, WB   |
| Recommended Dilution:   | WB 1:2000, FLOW 1:100  |
| Reactivity:             | Human, Mouse   |
| Host:                   | Mouse  |
| Isotype:                | IgG1   |
| Clonality:              | Monoclonal   |
| Immunogen:              | Full length human recombinant protein of human RYPB (NP_036366) produced in E.coli.  |
| Formulation:            | PBS (pH 7.3) containing 1% BSA, 50% glycerol.  |
| Concentration:          | 0.5 mg/ml  |
| Purification:           | Purified from mouse ascites fluids or tissue culture supernatant by affinity chromatography (protein A/G)                              |
| Conjugation:            | HRP  |
| Storage:                | Store at -20°C as received.  |
| Stability:              | Stable for 12 months from date of receipt.   |
| Predicted Protein Size: | 24.6 kDa   |
| Gene Name:              | RING1 and YY1 binding protein  |
| Database Link:          | <a href="#">NP_036366</a><br><a href="#">Entrez Gene 56353 Mouse</a> <a href="#">Entrez Gene 23429 Human</a><br><a href="#">Q8N488</a> |
| Synonyms:               | AAP1; APAP-1; DEDAF; YEAF1   |
| Protein Families:       | Druggable Genome, Transcription Factors  |



[View online »](#)

**Product images:**

HEK293T cells were transfected with the pCMV6-ENTRY control (Left lane) or pCMV6-ENTRY RYBP ([RC206186], Right lane) cDNA for 48 hrs and lysed. Equivalent amounts of cell lysates (5 ug per lane) were separated by SDS-PAGE and immunoblotted with anti-RYBP. Positive lysates [LY415887] (100ug) and [LC415887] (20ug) can be purchased separately from OriGene.



HEK293T cells transfected with either [RC206186] overexpress plasmid (Red) or empty vector control plasmid (Blue) were immunostained by anti-RYBP antibody ([TA800034]), and then analyzed by flow cytometry.