

Product datasheet for **TA800033S**

Ubiquinol Cytochrome C Reductase Core Protein I (UQCRC1) Mouse Monoclonal Antibody [Clone ID: OTI1G2]

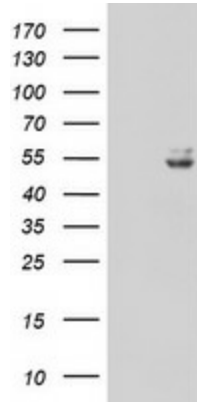
Product data:

Product Type:	Primary Antibodies
Clone Name:	OTI1G2
Applications:	IF, WB
Recommended Dilution:	WB 1:500~1000, IF 1:100
Reactivity:	Human, Mouse, Rat
Host:	Mouse
Isotype:	IgG1
Clonality:	Monoclonal
Immunogen:	Human recombinant protein fragment corresponding to amino acids 46-305 of human UQCRC1 (NP_003356) produced in E.coli.
Formulation:	PBS (pH 7.3) containing 1% BSA, 50% glycerol and 0.02% sodium azide.
Concentration:	1 mg/ml
Purification:	Purified from mouse ascites fluids or tissue culture supernatant by affinity chromatography (protein A/G)
Conjugation:	Unconjugated
Storage:	Store at -20°C as received.
Stability:	Stable for 12 months from date of receipt.
Predicted Protein Size:	52.5 kDa
Gene Name:	ubiquinol-cytochrome c reductase core protein I
Database Link:	NP_003356 Entrez Gene 22273 Mouse Entrez Gene 301011 Rat Entrez Gene 7384 Human P31930
Synonyms:	D3S3191; QCR1; UQCR1
Protein Families:	Druggable Genome, Protease
Protein Pathways:	Alzheimer's disease, Cardiac muscle contraction, Huntington's disease, Metabolic pathways, Oxidative phosphorylation, Parkinson's disease

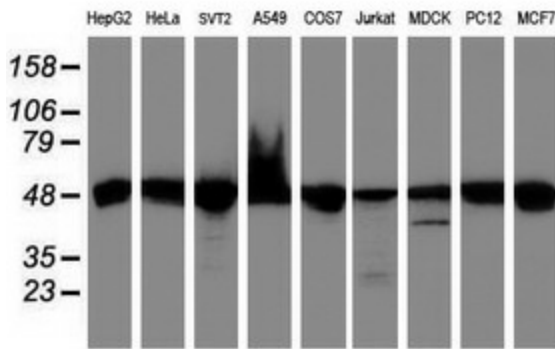


[View online »](#)

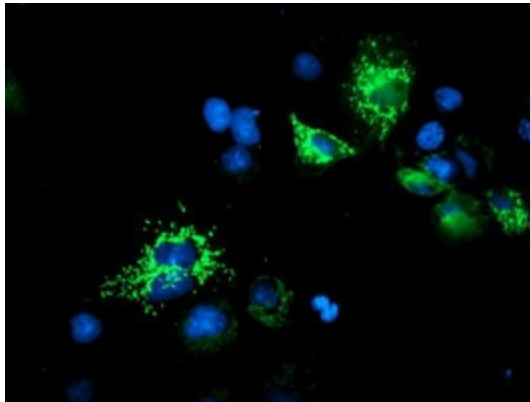
Product images:



HEK293T cells were transfected with the pCMV6-ENTRY control (Left lane) or pCMV6-ENTRY UQCRC1 ([RC203299], Right lane) cDNA for 48 hrs and lysed. Equivalent amounts of cell lysates (5 ug per lane) were separated by SDS-PAGE and immunoblotted with anti-UQCRC1. Positive lysates [LY401151] (100ug) and [LC401151] (20ug) can be purchased separately from OriGene.



Western blot analysis of extracts (35ug) from 9 different cell lines by using anti-UQCRC1 monoclonal antibody (HepG2: human; HeLa: human; SVT2: mouse; A549: human; COS7: monkey; Jurkat: human; MDCK: canine; PC12: rat; MCF7: human).



Anti-UQCRC1 mouse monoclonal antibody ([TA800033]) immunofluorescent staining of COS7 cells transiently transfected by pCMV6-ENTRY UQCRC1 ([RC203299]).