

## Product datasheet for **TA800025AM**

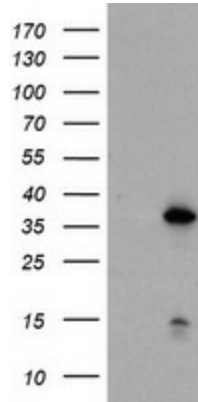
### DPPA4 Mouse Monoclonal Antibody (Biotin conjugated) [Clone ID: OTI1C1]

#### Product data:

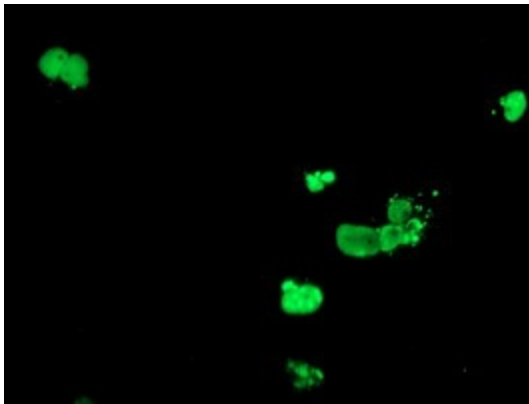
Product Type:	Primary Antibodies
Clone Name:	OTI1C1
Applications:	IF, WB
Recommended Dilution:	WB 1:2000, IF 1:100
Reactivity:	Human
Host:	Mouse
Isotype:	IgG1
Clonality:	Monoclonal
Immunogen:	Human recombinant protein fragment corresponding to amino acids 9-254 of human DPPA4 (NP_060659) produced in E.coli.
Formulation:	PBS (pH 7.3) containing 1% BSA, 50% glycerol and 0.02% sodium azide.
Concentration:	0.5 mg/ml
Purification:	Purified from mouse ascites fluids or tissue culture supernatant by affinity chromatography (protein A/G)
Conjugation:	Biotin
Storage:	Store at -20°C as received.
Stability:	Stable for 12 months from date of receipt.
Predicted Protein Size:	33.4 kDa
Gene Name:	developmental pluripotency associated 4
Database Link:	<a href="#">NP_060659</a> <a href="#">Entrez Gene 55211 Human</a> <a href="#">Q7L190</a>
Synonyms:	2410091M23Rik



[View online »](#)

**Product images:**

HEK293T cells were transfected with the pCMV6-ENTRY control (Left lane) or pCMV6-ENTRY DPPA4 ([RC205999], Right lane) cDNA for 48 hrs and lysed. Equivalent amounts of cell lysates (5 ug per lane) were separated by SDS-PAGE and immunoblotted with anti-DPPA4. Positive lysates [LY413234] (100ug) and [LC413234] (20ug) can be purchased separately from OriGene.



Anti-DPPA4 mouse monoclonal antibody ([TA800025]) immunofluorescent staining of COS7 cells transiently transfected by pCMV6-ENTRY DPPA4 ([RC205999]).