

Product datasheet for **TA800021S**

XTP4 (MIEN1) Mouse Monoclonal Antibody [Clone ID: OTI2D2]

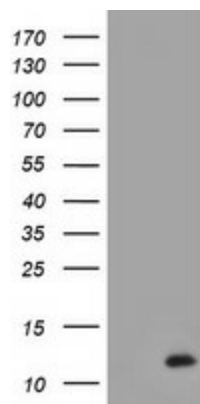
Product data:

Product Type:	Primary Antibodies
Clone Name:	OTI2D2
Applications:	FC, IHC, WB
Recommended Dilution:	WB 1:500~2000, IHC 1:150, FLOW 1:100
Reactivity:	Human, Dog, Rat, Monkey, Mouse
Host:	Mouse
Isotype:	IgG1
Clonality:	Monoclonal
Immunogen:	Full length human recombinant protein of human C17orf37 (NP_115715) produced in E.coli.
Formulation:	PBS (pH 7.3) containing 1% BSA, 50% glycerol and 0.02% sodium azide.
Concentration:	1 mg/ml
Purification:	Purified from mouse ascites fluids or tissue culture supernatant by affinity chromatography (protein A/G)
Conjugation:	Unconjugated
Storage:	Store at -20°C as received.
Stability:	Stable for 12 months from date of receipt.
Predicted Protein Size:	12.2 kDa
Gene Name:	migration and invasion enhancer 1
Database Link:	NP_115715 Entrez Gene 103742 Mouse Entrez Gene 360617 Rat Entrez Gene 480532 Dog Entrez Gene 697837 Monkey Entrez Gene 84299 Human Q9BRT3
Synonyms:	C17orf37; C35; ORB3; RDX12; XTP4

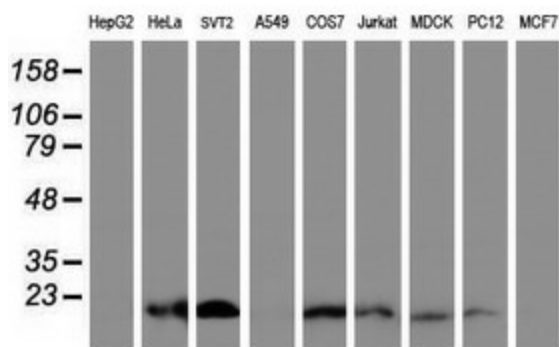


[View online »](#)

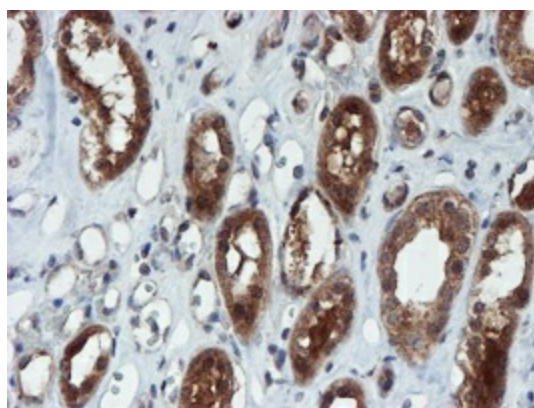
Product images:



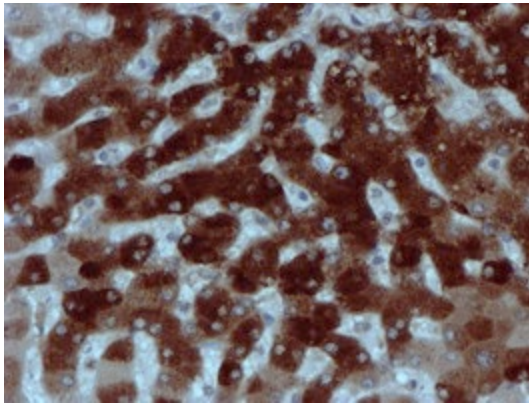
HEK293T cells were transfected with the pCMV6-ENTRY control (Cat# [PS100001], Left lane) or pCMV6-ENTRY C17orf37 (Cat# [RC203346], Right lane) cDNA for 48 hrs and lysed. Equivalent amounts of cell lysates (5 ug per lane) were separated by SDS-PAGE and immunoblotted with anti-C17orf37(Cat# [TA800021]). Positive lysates [LY410176] (100ug) and [LC410176] (20ug) can be purchased separately from OriGene.



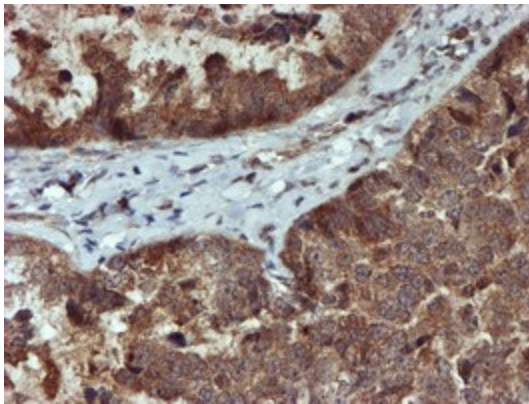
Western blot analysis of extracts (35ug) from 9 different cell lines by using anti-C17orf37 monoclonal antibody (HepG2: human; HeLa: human; SVT2: mouse; A549: human; COS7: monkey; Jurkat: human; MDCK: canine; PC12: rat; MCF7: human).



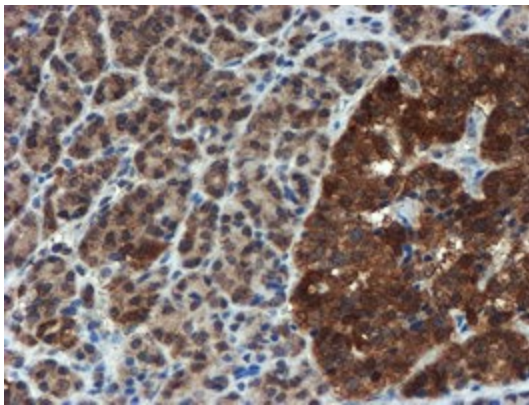
Immunohistochemical staining of paraffin-embedded Human Kidney tissue within the normal limits using anti-C17orf37 mouse monoclonal antibody. (Heat-induced epitope retrieval by 10mM citric buffer, pH6.0, 100°C for 10min, [TA800021])



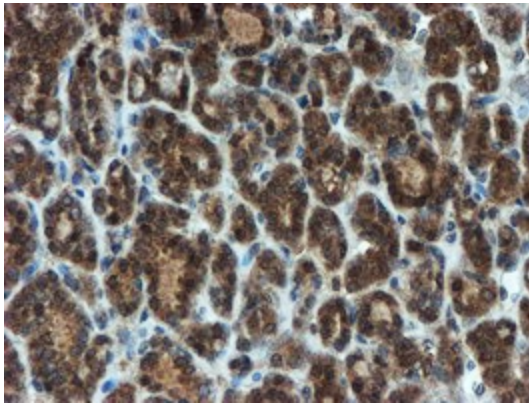
Immunohistochemical staining of paraffin-embedded Human liver tissue within the normal limits using anti-C17orf37 mouse monoclonal antibody. (Heat-induced epitope retrieval by 10mM citric buffer, pH6.0, 100°C for 10min, [TA800021])



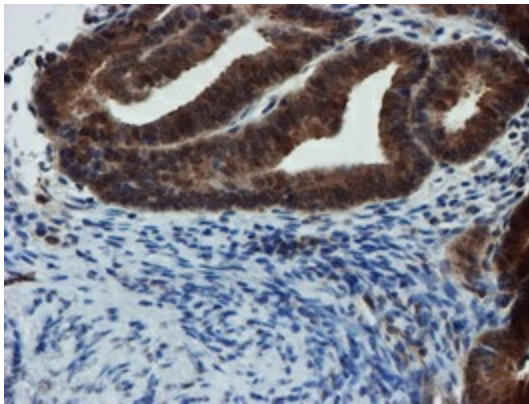
Immunohistochemical staining of paraffin-embedded Adenocarcinoma of Human ovary tissue using anti-C17orf37 mouse monoclonal antibody. (Heat-induced epitope retrieval by 10mM citric buffer, pH6.0, 100°C for 10min, [TA800021])



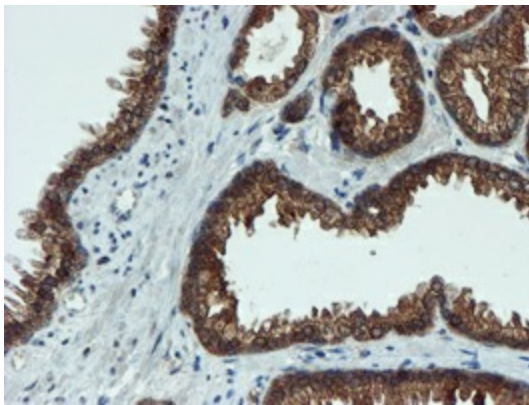
Immunohistochemical staining of paraffin-embedded Human pancreas tissue within the normal limits using anti-C17orf37 mouse monoclonal antibody. (Heat-induced epitope retrieval by 10mM citric buffer, pH6.0, 100°C for 10min, [TA800021])



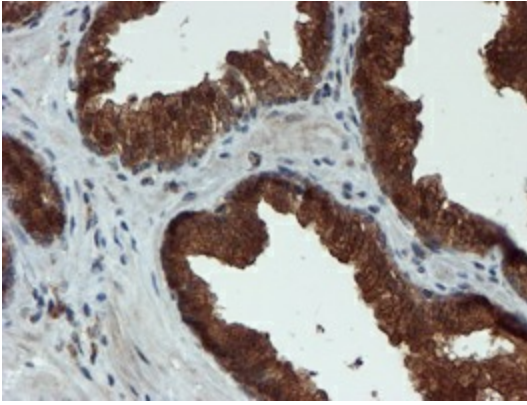
Immunohistochemical staining of paraffin-embedded Carcinoma of Human thyroid tissue using anti-C17orf37 mouse monoclonal antibody. (Heat-induced epitope retrieval by 10mM citric buffer, pH6.0, 100°C for 10min, [TA800021])



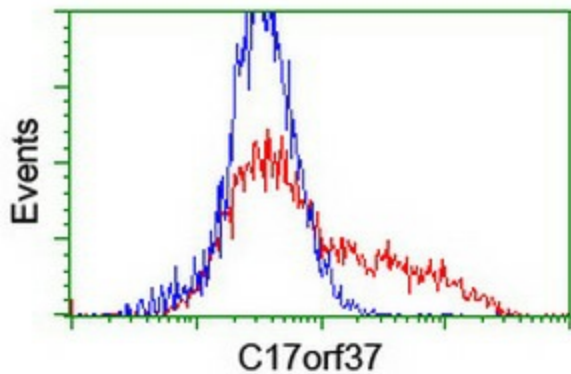
Immunohistochemical staining of paraffin-embedded Adenocarcinoma of Human endometrium tissue using anti-C17orf37 mouse monoclonal antibody. (Heat-induced epitope retrieval by 10mM citric buffer, pH6.0, 100°C for 10min, [TA800021])



Immunohistochemical staining of paraffin-embedded Human prostate tissue within the normal limits using anti-C17orf37 mouse monoclonal antibody. (Heat-induced epitope retrieval by 10mM citric buffer, pH6.0, 100°C for 10min, [TA800021])



Immunohistochemical staining of paraffin-embedded Carcinoma of Human prostate tissue using anti-C17orf37 mouse monoclonal antibody. (Heat-induced epitope retrieval by 10mM citric buffer, pH6.0, 100°C for 10min, [TA800021])



HEK293T cells transfected with either [RC203346] overexpress plasmid (Red) or empty vector control plasmid (Blue) were immunostained by anti-C17orf37 antibody ([TA800021]), and then analyzed by flow cytometry.