

Product datasheet for **TA800020AM**

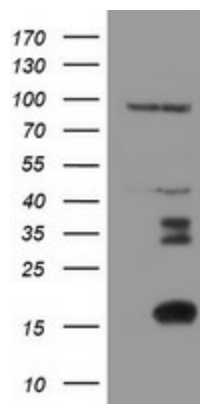
XTP4 (MIEN1) Mouse Monoclonal Antibody (Biotin conjugated) [Clone ID: OTI2D5]

Product data:

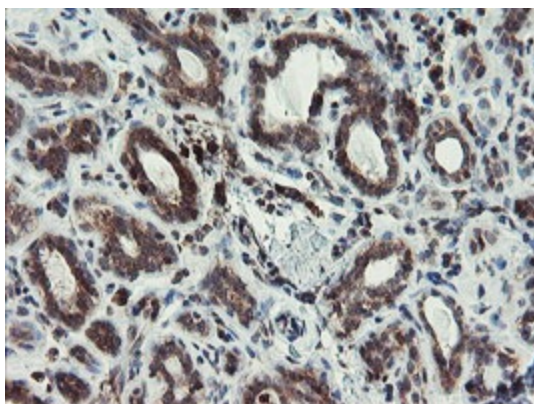
Product Type:	Primary Antibodies
Clone Name:	OTI2D5
Applications:	IF, IHC, WB
Recommended Dilution:	WB 1:500~2000, IHC 1:150, IF 1:100
Reactivity:	Human, Mouse
Host:	Mouse
Isotype:	IgG2b
Clonality:	Monoclonal
Immunogen:	Full length human recombinant protein of human C17orf37 (NP_115715) produced in E.coli.
Formulation:	PBS (pH 7.3) containing 1% BSA, 50% glycerol and 0.02% sodium azide.
Concentration:	0.5 mg/ml
Purification:	Purified from mouse ascites fluids or tissue culture supernatant by affinity chromatography (protein A/G)
Conjugation:	Biotin
Storage:	Store at -20°C as received.
Stability:	Stable for 12 months from date of receipt.
Predicted Protein Size:	12.2 kDa
Gene Name:	migration and invasion enhancer 1
Database Link:	NP_115715 Entrez Gene 103742 Mouse Entrez Gene 84299 Human Q9BRT3
Synonyms:	C17orf37; C35; ORB3; RDX12; XTP4



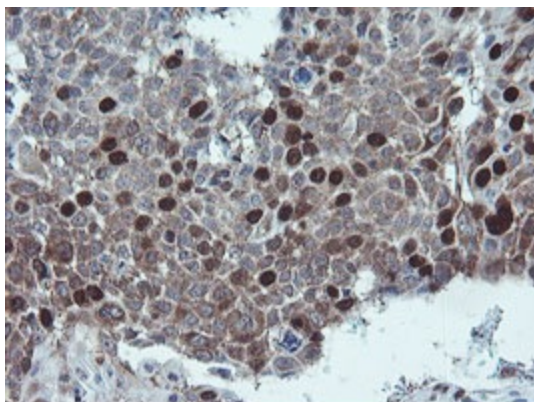
[View online »](#)

Product images:

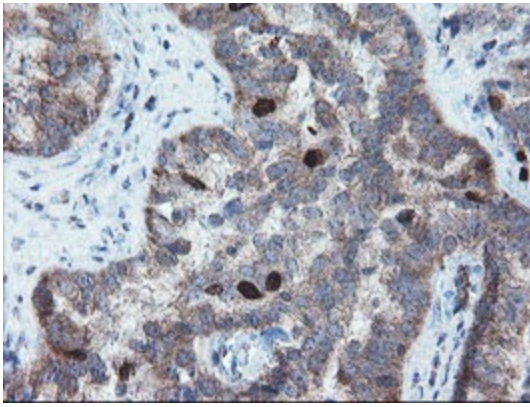
HEK293T cells were transfected with the pCMV6-ENTRY control (Left lane) or pCMV6-ENTRY C17orf37 ([RC203346], Right lane) cDNA for 48 hrs and lysed. Equivalent amounts of cell lysates (5 ug per lane) were separated by SDS-PAGE and immunoblotted with anti-C17orf37. Positive lysates [LY410176] (100ug) and [LC410176] (20ug) can be purchased separately from OriGene.



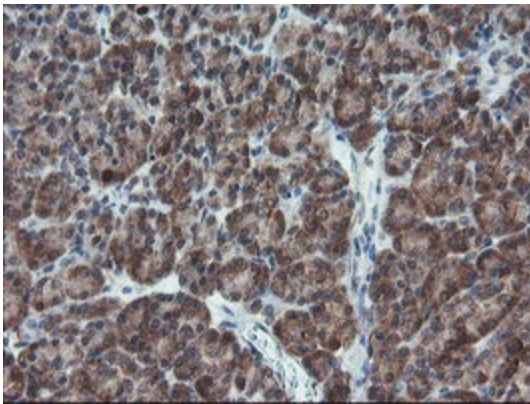
Immunohistochemical staining of paraffin-embedded Human breast tissue within the normal limits using anti-C17orf37 mouse monoclonal antibody. (Heat-induced epitope retrieval by 10mM citric buffer, pH6.0, 100°C for 10min, [TA800020])



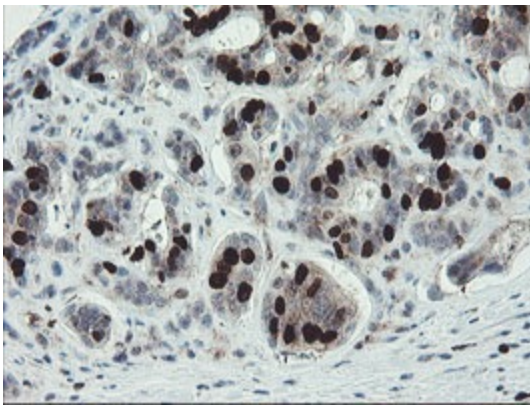
Immunohistochemical staining of paraffin-embedded Carcinoma of Human lung tissue using anti-C17orf37 mouse monoclonal antibody. (Heat-induced epitope retrieval by 10mM citric buffer, pH6.0, 100°C for 10min, [TA800020])



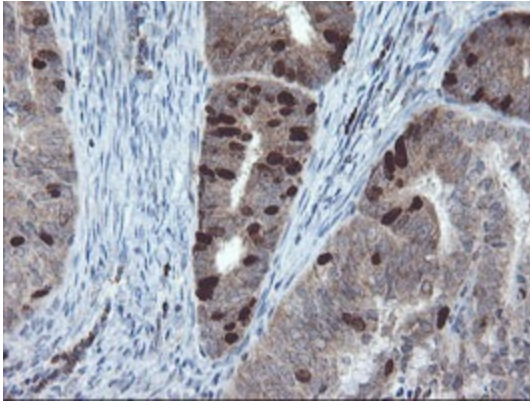
Immunohistochemical staining of paraffin-embedded Adenocarcinoma of Human ovary tissue using anti-C17orf37 mouse monoclonal antibody. (Heat-induced epitope retrieval by 10mM citric buffer, pH6.0, 100°C for 10min, [TA800020])



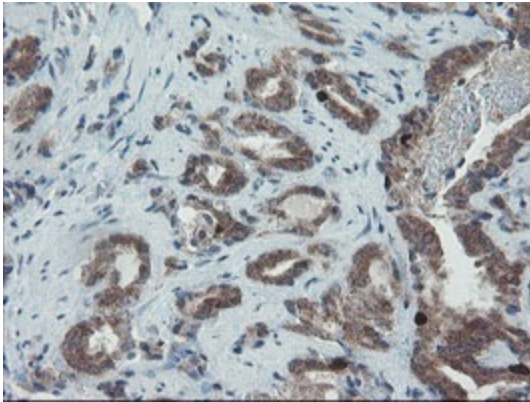
Immunohistochemical staining of paraffin-embedded Human pancreas tissue within the normal limits using anti-C17orf37 mouse monoclonal antibody. (Heat-induced epitope retrieval by 10mM citric buffer, pH6.0, 100°C for 10min, [TA800020])



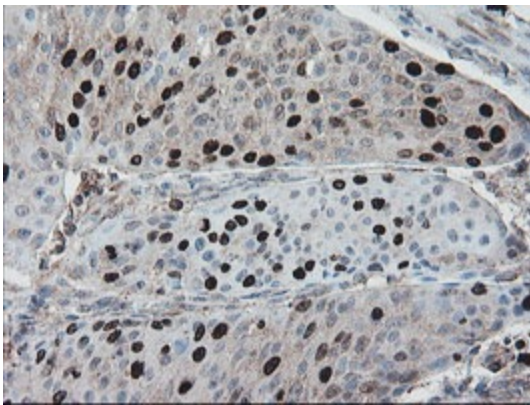
Immunohistochemical staining of paraffin-embedded Carcinoma of Human pancreas tissue using anti-C17orf37 mouse monoclonal antibody. (Heat-induced epitope retrieval by 10mM citric buffer, pH6.0, 100°C for 10min, [TA800020])



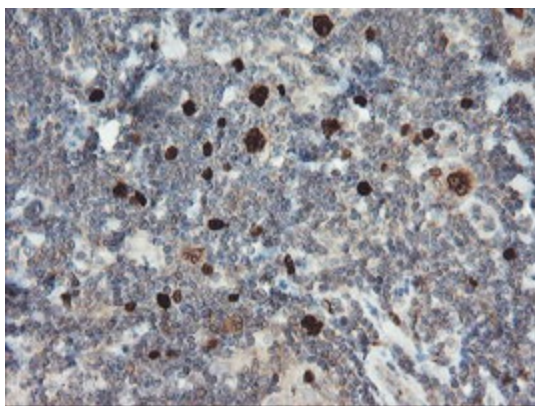
Immunohistochemical staining of paraffin-embedded Adenocarcinoma of Human endometrium tissue using anti-C17orf37 mouse monoclonal antibody. (Heat-induced epitope retrieval by 10mM citric buffer, pH6.0, 100°C for 10min, [TA800020])



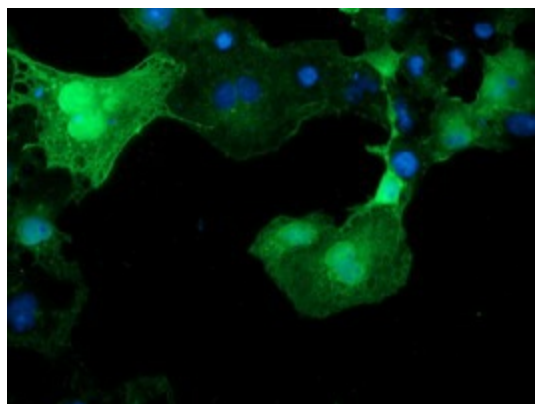
Immunohistochemical staining of paraffin-embedded Carcinoma of Human prostate tissue using anti-C17orf37 mouse monoclonal antibody. (Heat-induced epitope retrieval by 10mM citric buffer, pH6.0, 100°C for 10min, [TA800020])



Immunohistochemical staining of paraffin-embedded Carcinoma of Human bladder tissue using anti-C17orf37 mouse monoclonal antibody. (Heat-induced epitope retrieval by 10mM citric buffer, pH6.0, 100°C for 10min, [TA800020])



Immunohistochemical staining of paraffin-embedded Human lymphoma tissue using anti-C17orf37 mouse monoclonal antibody. (Heat-induced epitope retrieval by 10mM citric buffer, pH6.0, 100°C for 10min, [TA800020])



Anti-C17orf37 mouse monoclonal antibody ([TA800020]) immunofluorescent staining of COS7 cells transiently transfected by pCMV6-ENTRY C17orf37 ([RC203346]).