

## Product datasheet for **TA800001**

### SENP1 Mouse Monoclonal Antibody [Clone ID: OTI1D7]

#### Product data:

Product Type:	Primary Antibodies
Clone Name:	OTI1D7
Applications:	FC, WB
Recommended Dilution:	WB 1:1000, FLOW 1:100
Reactivity:	Human, Mouse, Rat
Host:	Mouse
Isotype:	IgG1
Clonality:	Monoclonal
Immunogen:	Human recombinant protein fragment corresponding to amino acids 221-460 of human SENP1 (NP_055369) produced in E.coli.
Formulation:	PBS (pH 7.3) containing 1% BSA, 50% glycerol and 0.02% sodium azide.
Concentration:	1 mg/ml
Purification:	Purified from mouse ascites fluids or tissue culture supernatant by affinity chromatography (protein A/G)
Conjugation:	Unconjugated
Storage:	Store at -20°C as received.
Stability:	Stable for 12 months from date of receipt.
Predicted Protein Size:	73.2 kDa
Gene Name:	SUMO1/sentrin specific peptidase 1
Database Link:	<a href="#">NP_055369</a> <a href="#">Entrez Gene 223870 Mouse</a> <a href="#">Entrez Gene 29843 Human</a> <a href="#">Q9P0U3</a>
Background:	The covalent modification of proteins by the small ubiquitin (UBB; MIM 191339)-like protein SUMO (see SUMO1, MIM 601912) is implicated in the regulation of nucleocytoplasmic transport, genomic stability, gene transcription, and other processes. Sumoylation is catalyzed on target lysine residues by a multienzyme process and is reversed by desumoylating enzymes such as SENP1 (Yamaguchi et al., 2005 [PubMed 15923632]). [supplied by OMIM]

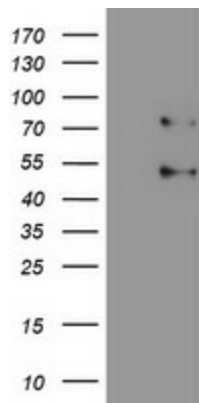


[View online »](#)

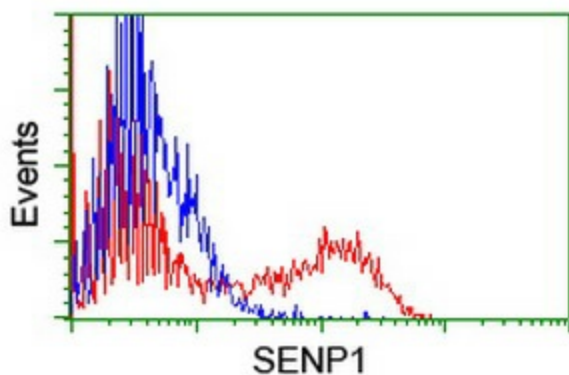
Synonyms: SuPr-2

Protein Families: Druggable Genome, Protease

### Product images:



HEK293T cells were transfected with the pCMV6-ENTRY control (Cat# [PS100001], Left lane) or pCMV6-ENTRY SENP1 (Cat# [RC207194], Right lane) cDNA for 48 hrs and lysed. Equivalent amounts of cell lysates (5 ug per lane) were separated by SDS-PAGE and immunoblotted with anti-SENP1(Cat# TA800001).



HEK293T cells transfected with either [RC207194] overexpress plasmid (Red) or empty vector control plasmid (Blue) were immunostained by anti-SENP1 antibody (TA800001), and then analyzed by flow cytometry.