

Product datasheet for TA700585

Angiopoietin 1 (ANGPT1) Biotinylated Mouse Monoclonal Detection Antibody (Biotin conjugated) [Clone ID: OT18C5]

Product data:

Product Type:	Primary Antibodies
Clone Name:	OT18C5
Applications:	ELISA
Reactivity:	Human, Mouse, Rat
Host:	Mouse
Isotype:	IgG1
Clonality:	Monoclonal
Immunogen:	Recombinant protein (20-320aa)
Formulation:	PBS (PH 7.3) containing 1% BSA, 50% glycerol and 0.02% sodium azide.
Concentration:	0.5mg/ml
Purification:	Purified from mouse ascites fluids by affinity chromatography (protein A/G)
Conjugation:	Biotin
Storage:	Shipped at -20°C or with ice packs, Upon delivery store at -20°C. Dilute in PBS(pH7.3) if necessary. Stable for 12 months from date of receipt. Avoid repeated freeze-thaws.
Predicted Protein Size:	57.3 kDa
Gene Name:	angiopoietin 1
Database Link:	<u>NP_001137</u> <u>Entrez Gene 11600 Mouse</u> <u>Entrez Gene 89807 Rat</u> <u>Entrez Gene 284 Human</u> <u>Q15389</u>



Background:

This gene encodes a secreted glycoprotein that belongs to the angiopoietin family. Members of this family play important roles in vascular development and angiogenesis. All angiopoietins bind with similar affinity to an endothelial cell-specific tyrosine-protein kinase receptor. The protein encoded by this gene is a secreted glycoprotein that activates the receptor by inducing its tyrosine phosphorylation. It plays a critical role in mediating reciprocal interactions between the endothelium and surrounding matrix and mesenchyme and inhibits endothelial permeability. The protein also contributes to blood vessel maturation and stability, and may be involved in early development of the heart. Mutations in this gene are associated with hereditary angioedema.

Synonyms:

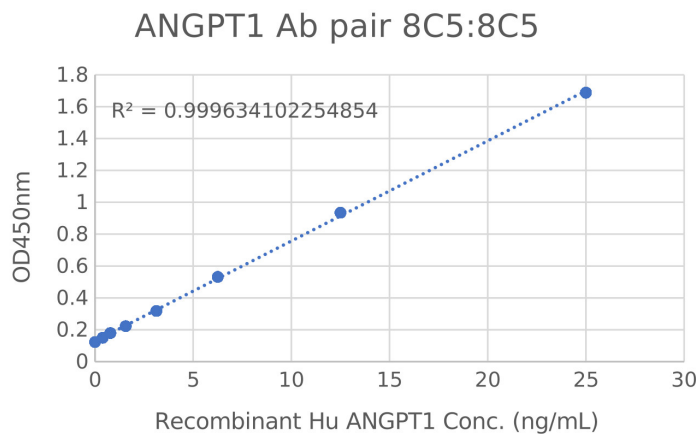
AGPI; AGPT; ANG1; HAE5

Matched ELISA Pair:

TA600585

Protein Families:

Druggable Genome, ES Cell Differentiation/IPS, Secreted Protein

Product images:

ANGPT1 ELISA with 8C5 Capture ([TA600585]) and 8C5 Detection (TA700585) Antibodies. Target protein used: Human ANGPT1 (E. coli expressed protein Cat# [TP762574])