

## Product datasheet for **TA700579**

### **Tau (MAPT) Biotinylated Rabbit Monoclonal Detection Antibody (HRP conjugated) [Clone ID: OTIR5B1]**

#### **Product data:**

Product Type:	Primary Antibodies
Clone Name:	OTIR5B1
Applications:	ELISA
Recommended Dilution:	ELISA 1:10000-1:100000
Reactivity:	Human
Host:	Rabbit
Isotype:	IgG
Clonality:	Monoclonal
Immunogen:	Full length human recombinant protein of human Tau (NP_005901) produced in E.coli.
Formulation:	PBS (PH 7.3) containing 1% BSA, 50% glycerol and 0.02% sodium azide.
Concentration:	0.5mg/ml
Purification:	Purified from mouse ascites fluids or tissue culture supernatant by affinity chromatography (protein A/G)
Conjugation:	HRP
Storage:	Shipped at -20°C or with ice packs, Upon delivery store at -20°C. Dilute in PBS(pH7.3) if necessary. Stable for 12 months from date of receipt. Avoid repeated freeze-thaws.
Stability:	Stable for 12 months from date to receipt.
Predicted Protein Size:	45.7 kDa
Gene Name:	microtubule associated protein tau
Database Link:	<a href="#">NP_005901</a> <a href="#">Entrez Gene 4137 Human</a> <a href="#">P10636</a>



[View online »](#)

**Background:** This gene encodes the microtubule-associated protein tau (MAPT) whose transcript undergoes complex, regulated alternative splicing, giving rise to several mRNA species. MAPT transcripts are differentially expressed in the nervous system, depending on stage of neuronal maturation and neuron type. MAPT gene mutations have been associated with several neurodegenerative disorders such as Alzheimer's disease, Pick's disease, frontotemporal dementia, cortico-basal degeneration and progressive supranuclear palsy. [provided by RefSeq, Jul 2008]

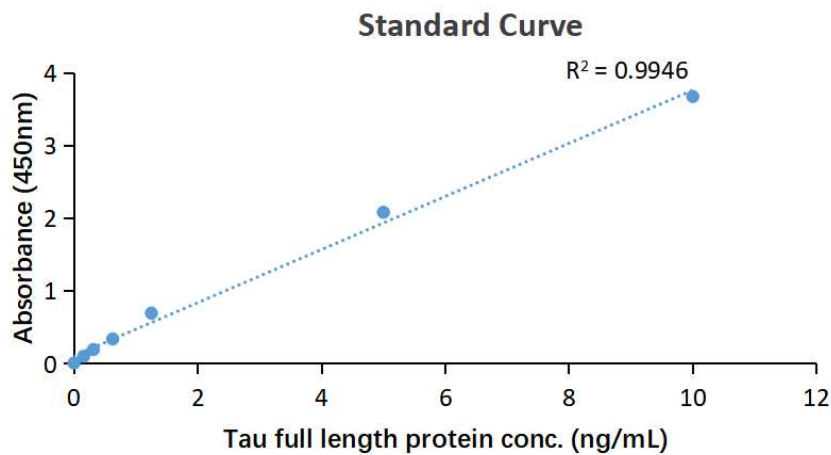
**Synonyms:** DDPAC; FTDP-17; MAPTL; MSTD; MTBT1; MTBT2; PPND; PPP1R103; TAU; tau-40

**Matched ELISA Pair:** TA600579

**Protein Families:** Druggable Genome

**Protein Pathways:** Alzheimer's disease, MAPK signaling pathway

## Product images:



Tau ELISA with 1B1 Capture ([TA600579]) and 5B1 Detection (TA700579) Antibodies. Substrate used: Tau full length protein