

## Product datasheet for **TA700562**

### **BNP (NPPB) Biotinylated Rabbit Monoclonal Detection Antibody (Biotin conjugated) [Clone ID: OTIR5D11]**

#### Product data:

Product Type:	Primary Antibodies
Clone Name:	OTIR5D11
Applications:	ELISA, LMNX
Reactivity:	Human
Host:	Rabbit
Isotype:	IgG
Clonality:	Monoclonal
Immunogen:	Synthetic peptide (the amino acid sequence is considered to be commercially sensitive) within Human BNP. The exact sequence is proprietary.
Formulation:	PBS (pH7.3) containing 1% BSA, 50% glycerol and 0.02% sodium azide
Concentration:	0.5 mg/ml
Purification:	Purified from mouse ascites fluids or tissue culture supernatant by affinity chromatography (protein A/G)
Conjugation:	Biotin
Storage:	Shipped at -20°C or with ice packs, Upon delivery store at -20°C. Dilute in PBS(pH7.3) if necessary. Stable for 12 months from date of receipt. Avoid repeated freeze-thaws.
Predicted Protein Size:	14.7 kDa
Gene Name:	natriuretic peptide B
Database Link:	<a href="#">NP_002512</a> <a href="#">Entrez Gene 4879 Human</a> <a href="#">P16860</a>



[View online »](#)

**Background:**

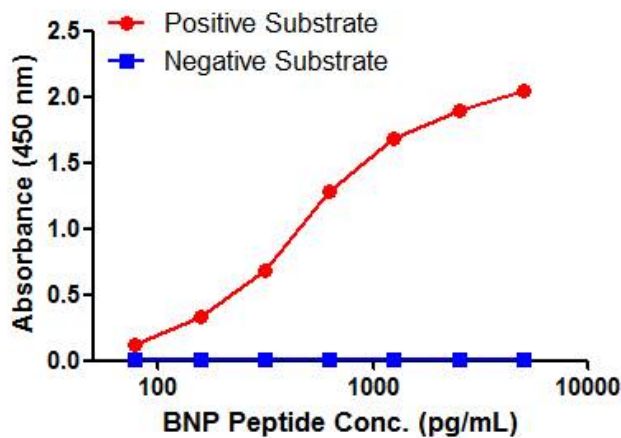
This gene is a member of the natriuretic peptide family and encodes a secreted protein which functions as a cardiac hormone. The protein undergoes two cleavage events, one within the cell and a second after secretion into the blood. The protein's biological actions include natriuresis, diuresis, vasorelaxation, inhibition of renin and aldosterone secretion, and a key role in cardiovascular homeostasis. A high concentration of this protein in the bloodstream is indicative of heart failure. The presence of myocardial injury is a significant predictor of mortality in hospitalized coronavirus disease 2019 (COVID-19) patients, and there is evidence of increased levels of natriuretic peptide B in hospitalized non-survivor COVID-19 patients. The protein also acts as an antimicrobial peptide with antibacterial and antifungal activity. Mutations in this gene have been associated with postmenopausal osteoporosis. [provided by RefSeq, Aug 2020]

**Synonyms:**

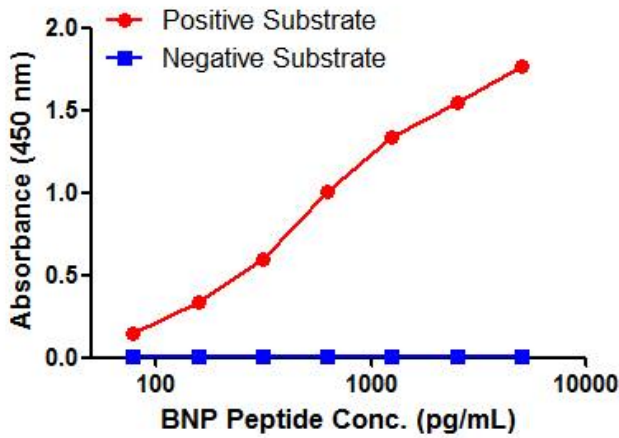
BNP; Iso-ANP

**Protein Families:**

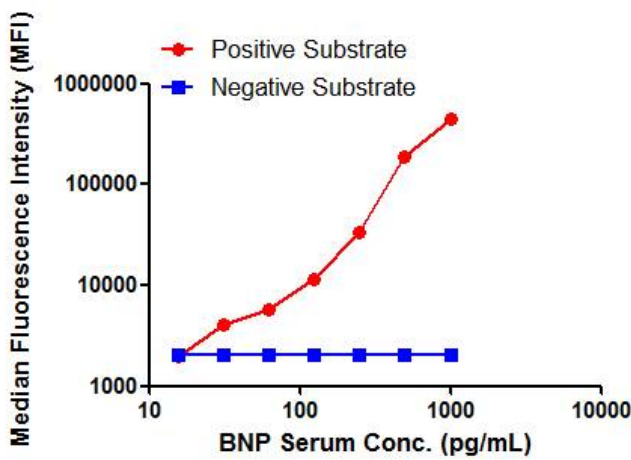
Druggable Genome, Secreted Protein, Stem cell - Pluripotency

**Product images:**

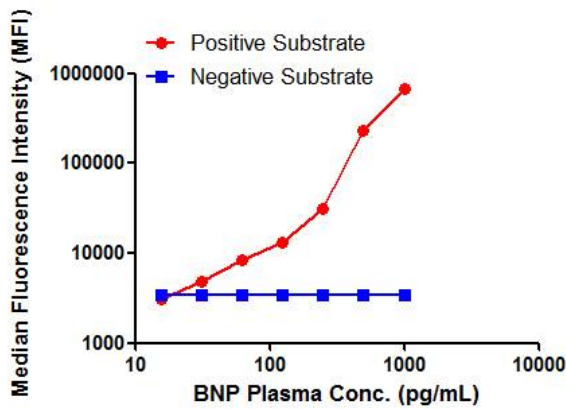
BNP ELISA with 5G8 Capture ([TA600562]) and 5D11 Detection (TA700562) Antibodies. Substrate used: Synthetic peptide with disulfide bond



BNP ELISA with 2A6 Capture ([TA600563]) and 5D11 Detection (TA700562) Antibodies. Substrate used: Synthetic peptide with disulfide bond



BNP Luminex ELISA with 5G8 Capture ([TA600562]) and 5D11 Detection (TA700562) Antibodies. Substrate used: BNP plasma



BNP Luminex ELISA with 2A6 Capture ([TA600563]) and 5D11 Detection (TA700562) Antibodies. Substrate used: BNP plasma