

## Product datasheet for **TA700559**

### **GFAP Biotinylated Mouse Monoclonal Detection Antibody (Biotin conjugated) [Clone ID: OTI10B2]**

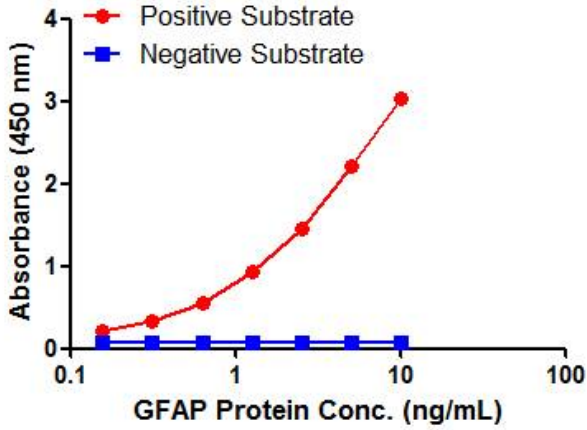
#### **Product data:**

Product Type:	Primary Antibodies
Clone Name:	OTI10B2
Applications:	ELISA, LMNX
Reactivity:	Human
Host:	Mouse
Isotype:	IgG2b
Clonality:	Monoclonal
Immunogen:	Full length human recombinant protein of human GFAP (NP_002046) produced in E.coli.
Formulation:	PBS (pH7.3) containing 1% BSA, 50% glycerol and 0.02% sodium azide
Concentration:	0.5 mg/ml
Purification:	Purified from mouse ascites fluids or tissue culture supernatant by affinity chromatography (protein A/G)
Conjugation:	Biotin
Storage:	Shipped at -20°C or with ice packs, Upon delivery store at -20°C. Dilute in PBS(pH7.3) if necessary. Stable for 12 months from date of receipt. Avoid repeated freeze-thaws.
Predicted Protein Size:	49.9 kDa
Gene Name:	glial fibrillary acidic protein
Database Link:	<a href="#">NP_002046</a> <a href="#">Entrez Gene 2670 Human P14136</a>
Background:	This gene encodes one of the major intermediate filament proteins of mature astrocytes. It is used as a marker to distinguish astrocytes from other glial cells during development. Mutations in this gene cause Alexander disease, a rare disorder of astrocytes in the central nervous system. Alternative splicing results in multiple transcript variants encoding distinct isoforms. [provided by RefSeq, Oct 2008]
Synonyms:	ALXDRD
Protein Families:	ES Cell Differentiation/IPS

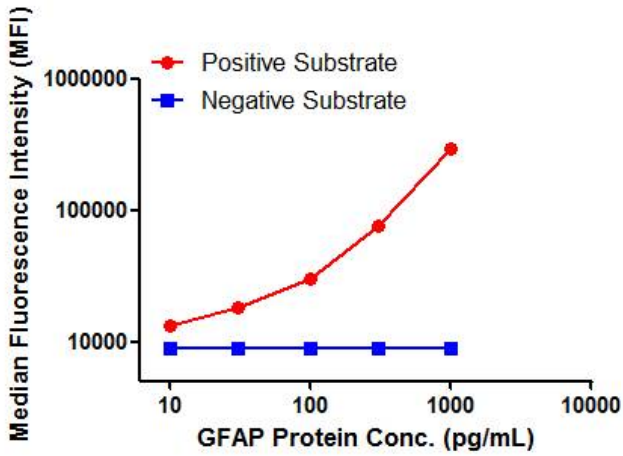


[View online »](#)

**Product images:**



GFAP ELISA with 4G7 Capture ([TA600559]) and 10B2 Detection (TA700559) Antibodies. Substrate used: Recombinant Human GFAP (KEK293 cells expressed protein)



GFAP Luminex ELISA with 4G7 Capture ([TA600559]) and 10B2 Detection (TA700559) Antibodies. Substrate used: Recombinant Human GFAP (KEK293 cells expressed protein)