

Product datasheet for **TA700558**

IgG4 Biotinylated Mouse Monoclonal Detection Antibody (Biotin conjugated) [Clone ID: OTI4B12]

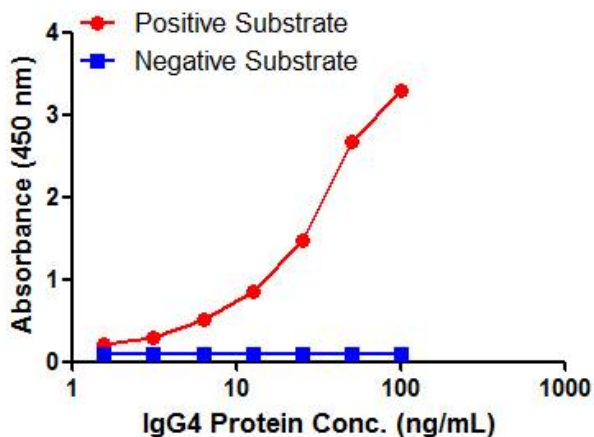
Product data:

Product Type:	Primary Antibodies
Clone Name:	OTI4B12
Applications:	ELISA
Reactivity:	Human
Host:	Mouse
Isotype:	IgG1
Clonality:	Monoclonal
Immunogen:	Native Human IgG4 protein
Formulation:	PBS (pH7.3) containing 1% BSA, 50% glycerol and 0.02% sodium azide
Concentration:	0.5 mg/ml
Purification:	Purified from mouse ascites fluids or tissue culture supernatant by affinity chromatography (protein A/G)
Conjugation:	Biotin
Storage:	Shipped at -20°C or with ice packs, Upon delivery store at -20°C. Dilute in PBS(pH7.3) if necessary. Stable for 12 months from date of receipt. Avoid repeated freeze-thaws.
Predicted Protein Size:	150KD
Matched ELISA Pair:	TA600558

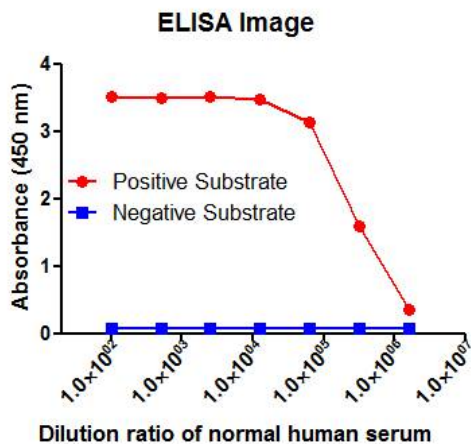


[View online »](#)

Product images:



IgG4 ELISA with 1C9 Capture ([TA600558]) and 4B12 Detection (TA700558) Antibodies. Substrate used: Native Human IgG4



IgG4 ELISA with 1C9 Capture ([TA600558]) and 4B12 Detection (TA700558) Antibodies. Substrate used: Normal human serum