

Product datasheet for **TA700557**

Calprotectin (S100A8/S100A9) Biotinylated Mouse Monoclonal Detection Antibody (Biotin conjugated)

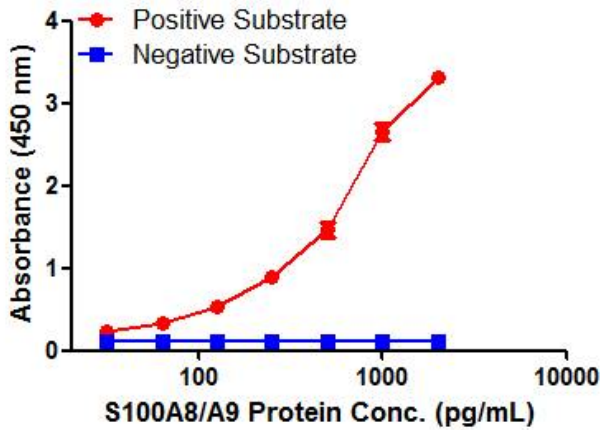
Product data:

Product Type:	Primary Antibodies
Clone Name:	OT15A9
Applications:	ELISA, LMNX
Reactivity:	Human
Host:	Mouse
Isotype:	IgG1
Clonality:	Monoclonal
Immunogen:	Full length human S100A8/A9 co-expression produced in E.coli.
Formulation:	PBS (pH7.3) containing 1% BSA, 50% glycerol and 0.02% sodium azide
Concentration:	0.5 mg/ml
Purification:	Purified from mouse ascites fluids or tissue culture supernatant by affinity chromatography (protein A/G)
Conjugation:	Biotin
Storage:	Shipped at -20°C or with ice packs, Upon delivery store at -20°C. Dilute in PBS(pH7.3) if necessary. Stable for 12 months from date of receipt. Avoid repeated freeze-thaws.
Predicted Protein Size:	25.76KD
Background:	The protein encoded by this gene is a member of the S100 family of proteins containing 2 EF-hand calcium-binding motifs. S100 proteins are localized in the cytoplasm and/or nucleus of a wide range of cells, and involved in the regulation of a number of cellular processes such as cell cycle progression and differentiation. S100 genes include at least 13 members which are located as a cluster on chromosome 1q21. S100A8 protein may function in the inhibition of casein kinase and as a cytokine. Altered expression of this protein is associated with the disease cystic fibrosis. Multiple transcript variants encoding different isoforms have been found for this gene. [provided by RefSeq, Jan 2016];S100A9 protein may function in the inhibition of casein kinase and altered expression of this protein is associated with the disease cystic fibrosis. This antimicrobial protein exhibits antifungal and antibacterial activity. [provided by RefSeq, Nov 2014]
Matched ELISA Pair:	TA600557

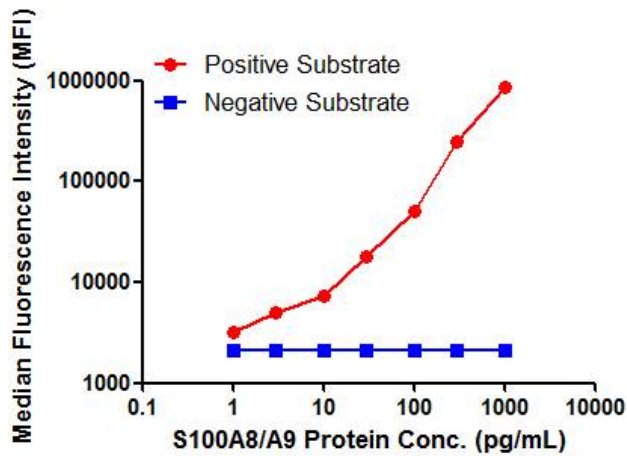


[View online »](#)

Product images:



S100A8/A9 ELISA with 11C6 Capture ([TA600557]) and 5A9 Detection (TA700557) Antibodies. Substrate used: Recombinant Human S100A8/A9 ((E.coli expressed protein)



S100A8/A9 Luminex ELISA with 11C6 Capture ([TA600557]) and 5A9 Detection (TA700557) Antibodies. Substrate used: Recombinant Human S100A8/A9 ((E.coli expressed protein)