

Product datasheet for **TA700556**

IL17 (IL17A) Biotinylated Mouse Monoclonal Detection Antibody (Biotin conjugated) [Clone ID: OT1E4]

Product data:

Product Type:	Primary Antibodies
Clone Name:	OT1E4
Applications:	ELISA, LMNX
Reactivity:	Human
Host:	Mouse
Isotype:	IgG1
Clonality:	Monoclonal
Immunogen:	Full length human recombinant protein of human IL-17A (NP_002181) produced in 293 cell.
Formulation:	PBS (pH7.3) containing 1% BSA, 50% glycerol and 0.02% sodium azide
Concentration:	0.5 mg/ml
Purification:	Purified from mouse ascites fluids or tissue culture supernatant by affinity chromatography (protein A/G)
Conjugation:	Biotin
Storage:	Shipped at -20°C or with ice packs, Upon delivery store at -20°C. Dilute in PBS(pH7.3) if necessary. Stable for 12 months from date of receipt. Avoid repeated freeze-thaws.
Predicted Protein Size:	17.5 kDa
Gene Name:	interleukin 17A
Database Link:	NP_002181 Entrez Gene 3605 Human Q16552
Background:	The protein encoded by this gene is a proinflammatory cytokine produced by activated T cells. This cytokine regulates the activities of NF-kappaB and mitogen-activated protein kinases. This cytokine can stimulate the expression of IL6 and cyclooxygenase-2 (PTGS2/COX-2), as well as enhance the production of nitric oxide (NO). High levels of this cytokine are associated with several chronic inflammatory diseases including rheumatoid arthritis, psoriasis and multiple sclerosis. [provided by RefSeq, Jul 2008]
Synonyms:	CTLA-8; CTLA8; IL-17; IL-17A; IL17; ILA17



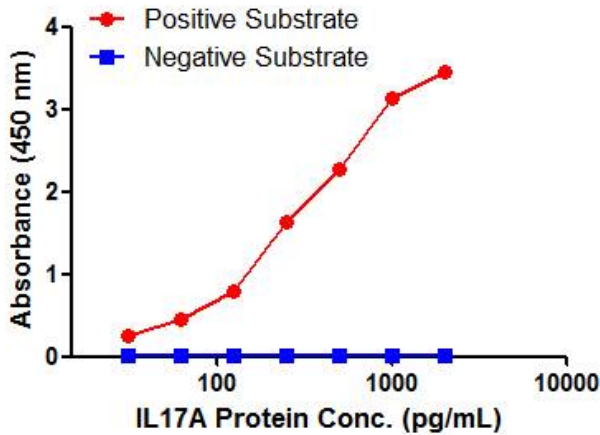
[View online »](#)

Matched ELISA Pair: TA600555, TA600556

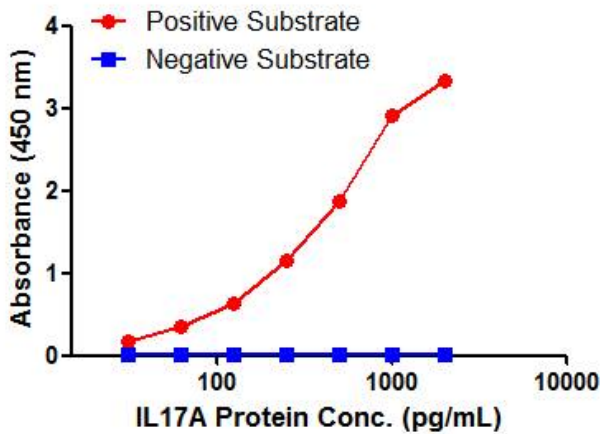
Protein Families: Druggable Genome, Secreted Protein

Protein Pathways: Cytokine-cytokine receptor interaction

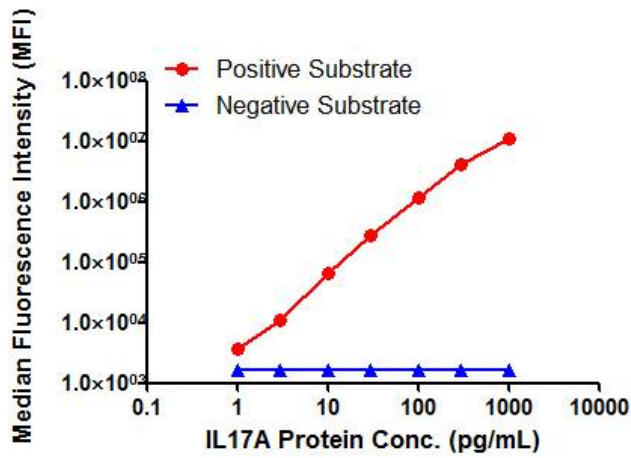
Product images:



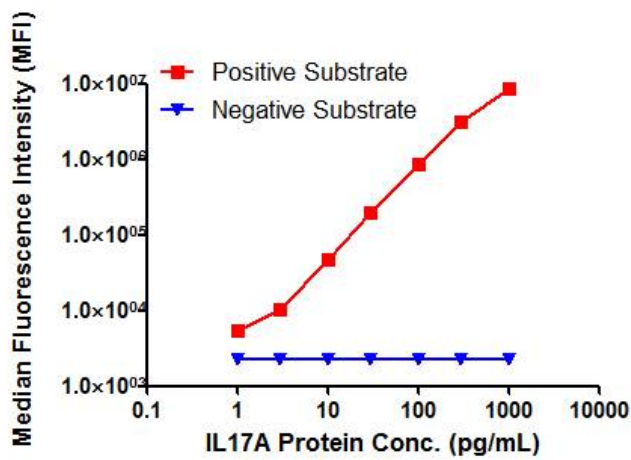
IL17A ELISA with 3D5 Capture ([TA600555]) and 1E4 Detection (TA700556) Antibodies. Substrate used: Recombinant Human IL17A (KEK293 cells expressed protein)



IL17A ELISA with 1G8 Capture ([TA600556]) and 1E4 Detection (TA700556) Antibodies. Substrate used: Recombinant Human IL17A (KEK293 cells expressed protein)



IL17A Luminex ELISA with 3D5 Capture ([TA600555]) and 1E4 Detection (TA700556) Antibodies. Substrate used: Recombinant Human IL17A (KEK293 cells expressed protein)



IL17A Luminex ELISA with 1G8 Capture ([TA600556]) and 1E4 Detection (TA700556) Antibodies. Substrate used: Recombinant Human IL17A (KEK293 cells expressed protein)