

## Product datasheet for **TA700553**

### **ST2 (IL1RL1) Biotinylated Mouse Monoclonal Detection Antibody (Biotin conjugated) [Clone ID: OTI21A7]**

#### **Product data:**

Product Type:	Primary Antibodies
Clone Name:	OTI21A7
Applications:	ELISA
Reactivity:	Human
Host:	Mouse
Isotype:	IgG1
Clonality:	Monoclonal
Immunogen:	Full length human recombinant protein of human ST2 (NP_057316) produced in HEK293E.
Formulation:	PBS (pH7.3) containing 1% BSA, 50% glycerol and 0.02% sodium azide
Concentration:	0.5 mg/ml
Purification:	Purified from mouse ascites fluids or tissue culture supernatant by affinity chromatography (protein A/G)
Conjugation:	Biotin
Storage:	Shipped at -20°C or with ice packs, Upon delivery store at -20°C. Dilute in PBS(pH7.3) if necessary. Stable for 12 months from date of receipt. Avoid repeated freeze-thaws.
Predicted Protein Size:	63.36 kDa
Gene Name:	interleukin 1 receptor like 1
Database Link:	<a href="#">NP_057316</a> <a href="#">Entrez Gene 9173 Human</a> <a href="#">Q01638</a>
Background:	The protein encoded by this gene is a member of the interleukin 1 receptor family. Studies of the similar gene in mouse suggested that this receptor can be induced by proinflammatory stimuli, and may be involved in the function of helper T cells. This gene, interleukin 1 receptor, type I (IL1R1), interleukin 1 receptor, type II (IL1R2) and interleukin 1 receptor-like 2 (IL1RL2) form a cytokine receptor gene cluster in a region mapped to chromosome 2q12. Alternative splicing of this gene results in multiple transcript variants. [provided by RefSeq, Jul 2008]



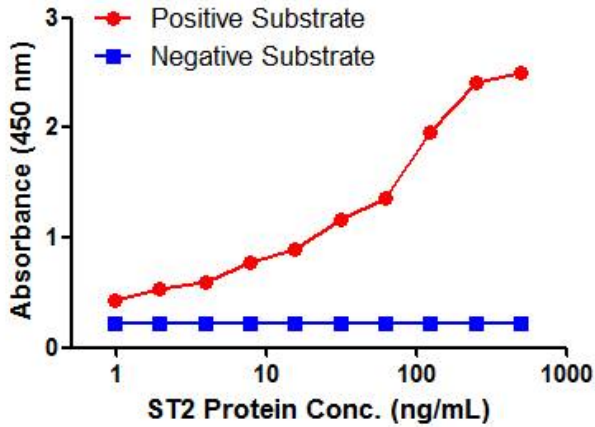
[View online »](#)

Synonyms: DER4; FIT-1; IL33R; ST2; ST2L; ST2V; T1

Matched ELISA Pair: TA600553

Protein Families: Druggable Genome, Secreted Protein, Transmembrane

### Product images:



ST2 ELISA with 6E12 Capture ([TA600553]) and 21A7 Detection (TA700553) Antibodies. Substrate used: Recombinant Human IL-6 (HEK293 cells expressed protein)