

## Product datasheet for **TA700551**

### **PSP (REG1A) Biotinylated Mouse Monoclonal Detection Antibody (Biotin conjugated) [Clone ID: OTI4B9]**

#### **Product data:**

<b>Product Type:</b>	Primary Antibodies
<b>Clone Name:</b>	OTI4B9
<b>Applications:</b>	ELISA
<b>Reactivity:</b>	Human
<b>Host:</b>	Mouse
<b>Isotype:</b>	IgG1
<b>Clonality:</b>	Monoclonal
<b>Immunogen:</b>	Human recombinant protein fragment corresponding to amino acids 23-166 of human PSP (NP_002900) produced in E.coli.
<b>Formulation:</b>	PBS (pH7.3) containing 1% BSA, 50% glycerol and 0.02% sodium azide
<b>Concentration:</b>	0.5 mg/ml
<b>Purification:</b>	Purified from mouse ascites fluids or tissue culture supernatant by affinity chromatography (protein A/G)
<b>Conjugation:</b>	Biotin
<b>Storage:</b>	Shipped at -20°C or with ice packs, Upon delivery store at -20°C. Dilute in PBS(pH7.3) if necessary. Stable for 12 months from date of receipt. Avoid repeated freeze-thaws.
<b>Predicted Protein Size:</b>	18.7 kDa
<b>Gene Name:</b>	regenerating family member 1 alpha
<b>Database Link:</b>	<a href="#">NP_002900</a> <a href="#">Entrez Gene 5967 Human</a> <a href="#">P05451</a>



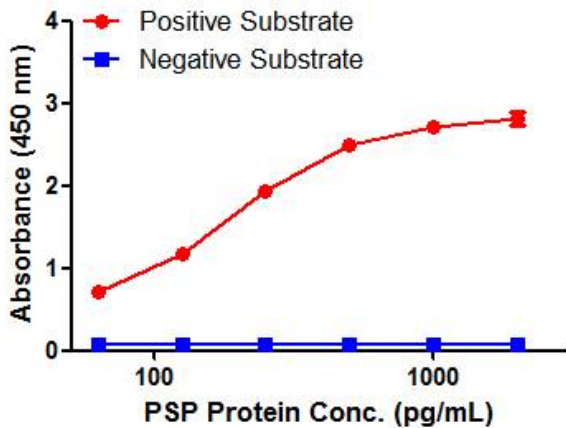
[View online »](#)

**Background:**

This gene is a type I subclass member of the Reg gene family. The Reg gene family is a multigene family grouped into four subclasses, types I, II, III and IV, based on the primary structures of the encoded proteins. This gene encodes a protein that is secreted by the exocrine pancreas. It is associated with islet cell regeneration and diabetogenesis and may be involved in pancreatic lithogenesis. Reg family members REG1B, REGL, PAP and this gene are tandemly clustered on chromosome 2p12 and may have arisen from the same ancestral gene by gene duplication. [provided by RefSeq, Jul 2008]

**Synonyms:**

ICRF; P19; PSP; PSPS; PSPS1; PTP; REG

**Product images:**

PSP ELISA with 2E1 Capture ([TA600551]) and 4B9 Detection (TA700551) Antibodies. Substrate used: Recombinant Human PSP (E.coli expressed protein)