

Product datasheet for **TA700550**

D-Dimer Biotinylated Mouse Monoclonal Detection Antibody (Biotin conjugated) [Clone ID: OTI11H8]

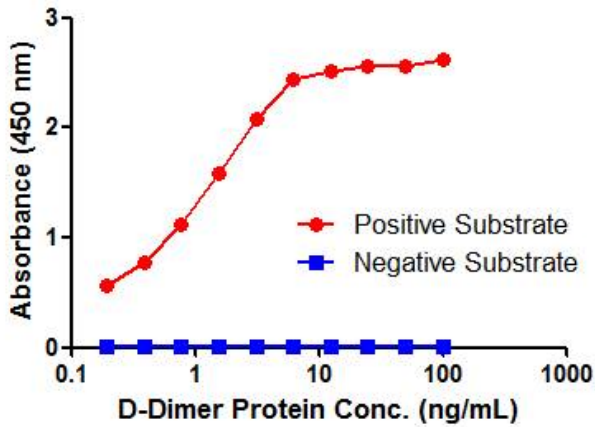
Product data:

Product Type:	Primary Antibodies
Clone Name:	OTI11H8
Applications:	ELISA
Reactivity:	Human
Host:	Mouse
Isotype:	IgG1
Clonality:	Monoclonal
Immunogen:	Native Human D-Dimer protein
Formulation:	PBS (pH7.3) containing 1% BSA, 50% glycerol and 0.02% sodium azide
Concentration:	0.5 mg/ml
Purification:	Purified from mouse ascites fluids or tissue culture supernatant by affinity chromatography (protein A/G)
Conjugation:	Biotin
Storage:	Shipped at -20°C or with ice packs, Upon delivery store at -20°C. Dilute in PBS(pH7.3) if necessary. Stable for 12 months from date of receipt. Avoid repeated freeze-thaws.
Predicted Protein Size:	180KD
Matched ELISA Pair:	TA600550

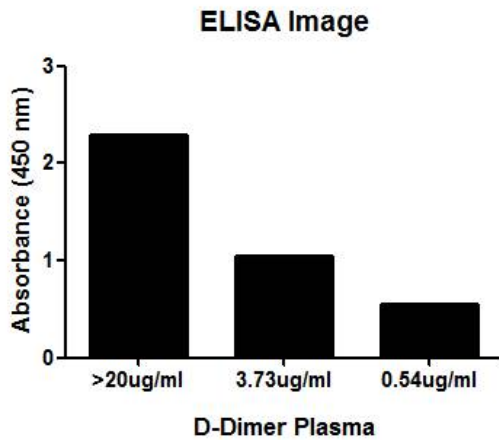


[View online »](#)

Product images:



D-Dimer ELISA with 12F5 Capture ([TA600550]) and 11H8 Detection (TA700550) Antibodies. Substrate used: Native Human D-Dimer protein



D-Dimer ELISA with 12F5 Capture ([TA600550]) and 11H8 Detection (TA700550) Antibodies. Substrate used: D-Dimer plasma (diluted 100 times)