

Product datasheet for **TA700549**

AMH Biotinylated Rabbit Monoclonal Detection Antibody (Biotin conjugated) [Clone ID: OTIR5C11]

Product data:

Product Type:	Primary Antibodies
Clone Name:	OTIR5C11
Applications:	ELISA, LMNX
Reactivity:	Human
Host:	Rabbit
Isotype:	IgG
Clonality:	Monoclonal
Immunogen:	Recombinant protein (26-560aa) of human AMH produced in HEK293
Formulation:	PBS (pH7.3) containing 1% BSA, 50% glycerol and 0.02% sodium azide
Concentration:	0.5 mg/ml
Purification:	Purified from mouse ascites fluids or tissue culture supernatant by affinity chromatography (protein A/G)
Conjugation:	Biotin
Storage:	Shipped at -20°C or with ice packs, Upon delivery store at -20°C. Dilute in PBS(pH7.3) if necessary. Stable for 12 months from date of receipt. Avoid repeated freeze-thaws.
Predicted Protein Size:	59.17 kDa
Gene Name:	anti-Mullerian hormone
Database Link:	NP_000470 Entrez Gene 268 Human P03971



[View online »](#)

Background:

This gene encodes a secreted ligand of the TGF-beta (transforming growth factor-beta) superfamily of proteins. Ligands of this family bind various TGF-beta receptors leading to recruitment and activation of SMAD family transcription factors that regulate gene expression. The encoded preproprotein is proteolytically processed to generate N- and C-terminal cleavage products that homodimerize and associate to form a biologically active noncovalent complex. This complex binds to the anti-Mullerian hormone receptor type 2 and causes the regression of Mullerian ducts in the male embryo that would otherwise differentiate into the uterus and fallopian tubes. This protein also plays a role in Leydig cell differentiation and function and follicular development in adult females. Mutations in this gene result in persistent Mullerian duct syndrome. [provided by RefSeq, Jul 2016]

Synonyms:

MIF; MIS

Matched ELISA Pair:

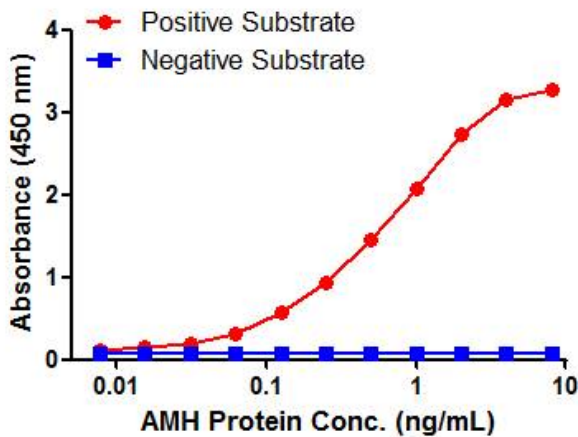
TA600549

Protein Families:

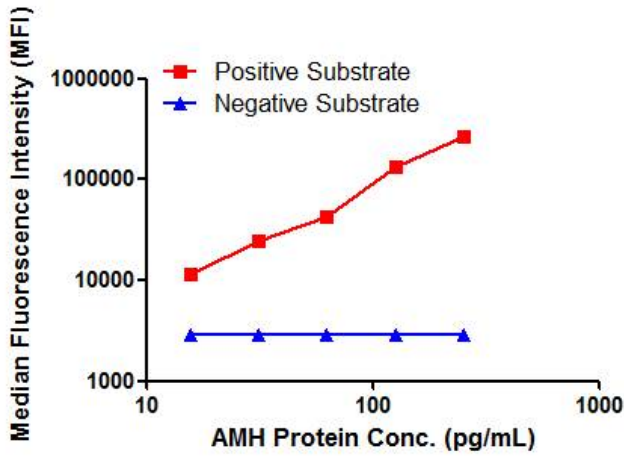
Druggable Genome, Secreted Protein

Protein Pathways:

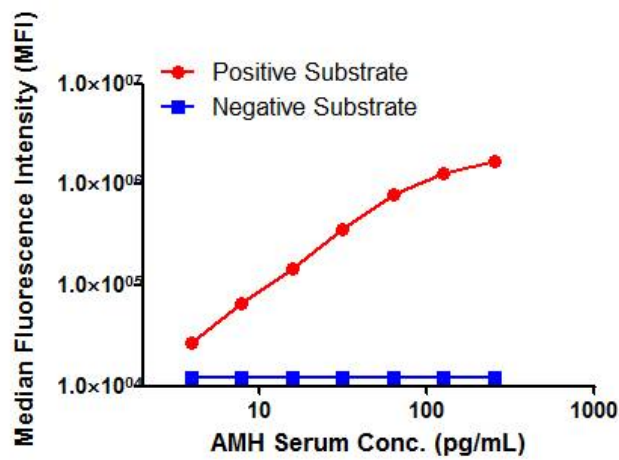
Cytokine-cytokine receptor interaction, TGF-beta signaling pathway

Product images:

AMH ELISA with 5D9 Capture ([TA600549]) and 5C11 Detection (TA700549) Antibodies. Substrate used: Recombinant Human AMH (CHO cells expressed protein Cat#[TP701045])



AMH Luminex ELISA with 5D9 Capture ([TA600549]) and 5C11 Detection (TA700549) Antibodies. Substrate used: Recombinant Human AMH (CHO cells expressed protein Cat# [TP701045])



AMH Luminex ELISA with 5D9 Capture ([TA600549]) and 5C11 Detection (TA700549) Antibodies. Substrate used: AMH Serum