

## Product datasheet for **TA700538**

### PCNA Biotinylated Mouse Monoclonal Detection Antibody (Biotin conjugated) [Clone ID: OTI1D11]

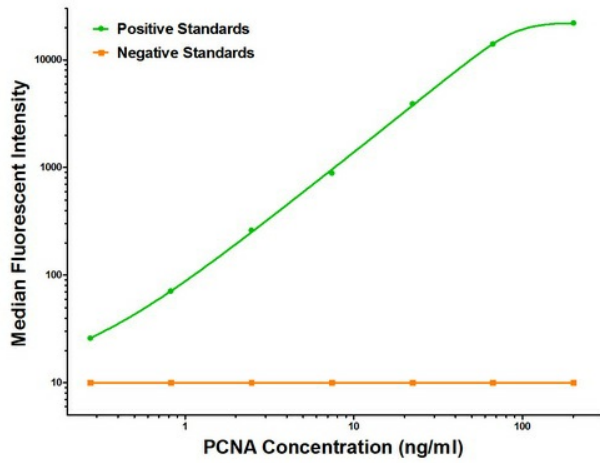
#### Product data:

Product Type:	Primary Antibodies
Clone Name:	OTI1D11
Applications:	ELISA
Recommended Dilution:	ELISA 1:250-1:1000
Reactivity:	Human, Mouse, Rat
Host:	Mouse
Isotype:	IgG1
Clonality:	Monoclonal
Immunogen:	Full length human recombinant protein of human PCNA (NM_002592) produced in HEK293T cell.
Formulation:	Stored in PBS (pH 7.4) with 0.05% sodium azide, 10mg/ml BSA, 50% glycerol
Concentration:	0.5 mg/ml
Conjugation:	Biotin
Storage:	Store at -20°C as received.
Stability:	Stable for 12 months from date of receipt.
Gene Name:	proliferating cell nuclear antigen
Database Link:	<a href="#">NP_002583</a> <a href="#">Entrez Gene 18538 MouseEntrez Gene 25737 RatEntrez Gene 5111 Human P12004</a>
Synonyms:	ATLD2
Matched ELISA Pair:	TA600538
Protein Families:	Druggable Genome, Stem cell - Pluripotency
Protein Pathways:	Base excision repair, Cell cycle, DNA replication, Mismatch repair, Nucleotide excision repair



[View online »](#)

Product images:



PCNA Luminex with 4G3 Capture ([TA600538]) and 1D11 Detection (TA700538) Antibodies. Substrate used: Recombinant Human PCNA ([TP301741])