

Product datasheet for **TA700531**

GC1q R (C1QBP) Biotinylated Mouse Monoclonal Detection Antibody (Biotin conjugated) **[Clone ID: OTI6E5]**

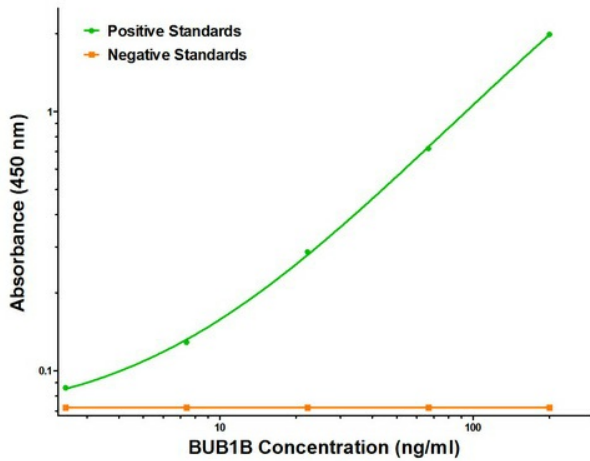
Product data:

Product Type:	Primary Antibodies
Clone Name:	OTI6E5
Applications:	ELISA
Recommended Dilution:	ELISA 1:250-1:1000
Reactivity:	Human, Mouse, Rat
Host:	Mouse
Isotype:	IgG1
Clonality:	Monoclonal
Immunogen:	Full length human recombinant protein of human BUB1B (NM_001211) produced in HEK293T cell.
Formulation:	Stored in PBS (pH 7.4) with 0.05% sodium azide, 10mg/ml BSA, 50% glycerol
Concentration:	0.5 mg/ml
Conjugation:	Biotin
Storage:	Store at -20°C as received.
Stability:	Stable for 12 months from date of receipt.
Gene Name:	complement C1q binding protein
Database Link:	NP_001203 Entrez Gene 12261 Mouse Entrez Gene 29681 Rat Entrez Gene 708 Human Q07021
Synonyms:	gC1Q-R; GC1QBP; gC1qR; HABP1; p32; SF2p32
Matched ELISA Pair:	TA600521

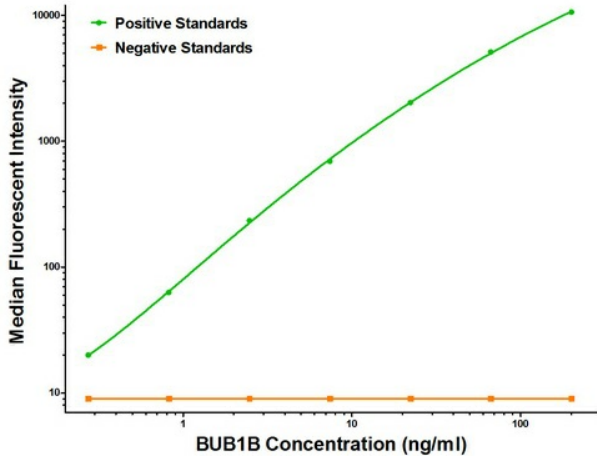


[View online »](#)

Product images:



BUB1B ELISA with 3C7 Capture ([TA600521]) and 6E5 Detection (TA700531) Antibodies. Substrate used: Recombinant Human BUB1B ([TP305844])



BUB1B Luminex with 3C7 Capture ([TA600521]) and 6E5 Detection (TA700531) Antibodies. Substrate used: Recombinant Human BUB1B ([TP305844])