

## Product datasheet for **TA700523**

### SSB Biotinylated Mouse Monoclonal Detection Antibody (Biotin conjugated) [Clone ID: OTI1E11]

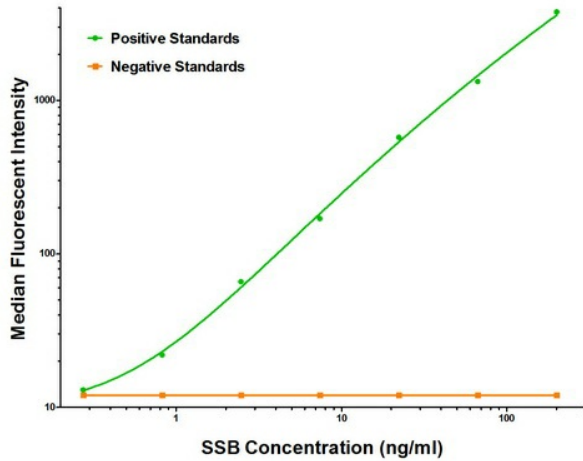
#### Product data:

Product Type:	Primary Antibodies
Clone Name:	OTI1E11
Applications:	ELISA
Recommended Dilution:	ELISA 1:250-1:1000
Reactivity:	Human
Host:	Mouse
Isotype:	IgG1
Clonality:	Monoclonal
Immunogen:	Full length human recombinant protein of human SSB (NM_003142) produced in HEK293T cell.
Formulation:	Stored in PBS (pH 7.4) with 0.05% sodium azide, 10mg/ml BSA, 50% glycerol
Concentration:	0.5 mg/ml
Conjugation:	Biotin
Storage:	Store at -20°C as received.
Stability:	Stable for 12 months from date of receipt.
Gene Name:	small RNA binding exonuclease protection factor La
Database Link:	<a href="#">NP_003133</a> <a href="#">Entrez Gene 6741 Human P05455</a>
Synonyms:	La; La/SSB; LARP3
Matched ELISA Pair:	TA600523, TA600524
Protein Families:	Stem cell - Pluripotency, Transcription Factors
Protein Pathways:	Systemic lupus erythematosus

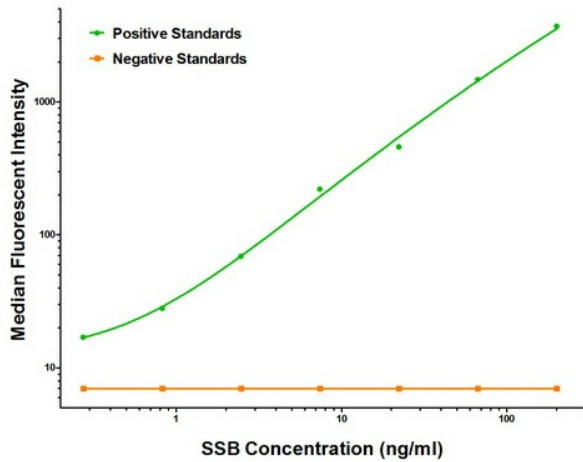


[View online »](#)

Product images:



SSB Luminex with 6G7 Capture ([TA600523]) and 1E11 Detection (TA700523) Antibodies. Substrate used: Recombinant Human SSB ([TP305013])



SSB Luminex with 9D6 Capture ([TA600524]) and 1E11 Detection (TA700523) Antibodies. Substrate used: Recombinant Human SSB ([TP305013])