

Product datasheet for **TA700522**

SSB Biotinylated Mouse Monoclonal Detection Antibody (Biotin conjugated) [Clone ID: OTI9D6]

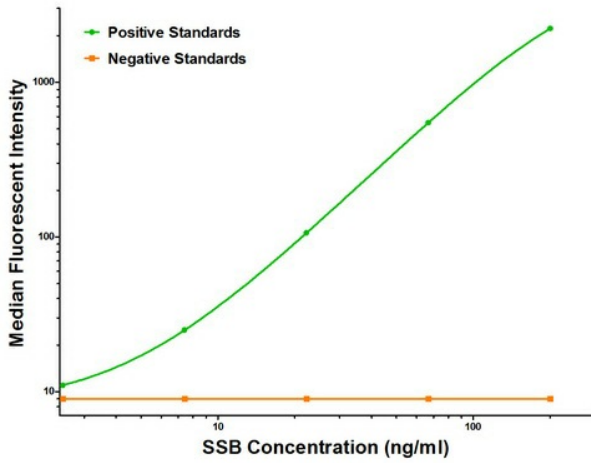
Product data:

Product Type:	Primary Antibodies
Clone Name:	OTI9D6
Applications:	ELISA
Recommended Dilution:	ELISA 1:250-1:1000
Reactivity:	Human
Host:	Mouse
Isotype:	IgG1
Clonality:	Monoclonal
Immunogen:	Full length human recombinant protein of human SSB (NM_003142) produced in HEK293T cell.
Formulation:	Stored in PBS (pH 7.4) with 0.05% sodium azide, 10mg/ml BSA, 50% glycerol
Concentration:	0.5 mg/ml
Conjugation:	Biotin
Storage:	Store at -20°C as received.
Stability:	Stable for 12 months from date of receipt.
Gene Name:	small RNA binding exonuclease protection factor La
Database Link:	NP_003133 Entrez Gene 6741 Human P05455
Synonyms:	La; La/SSB; LARP3
Matched ELISA Pair:	TA600522
Protein Families:	Stem cell - Pluripotency, Transcription Factors
Protein Pathways:	Systemic lupus erythematosus



[View online »](#)

Product images:



SSB Luminex with 1E11 Capture ([TA600522]) and 9D6 Detection (TA700522) Antibodies. Substrate used: Recombinant Human SSB ([TP305013])