

## Product datasheet for **TA700520**

### **TUBA8 Biotinylated Mouse Monoclonal Detection Antibody (Biotin conjugated) [Clone ID: OTI3E10]**

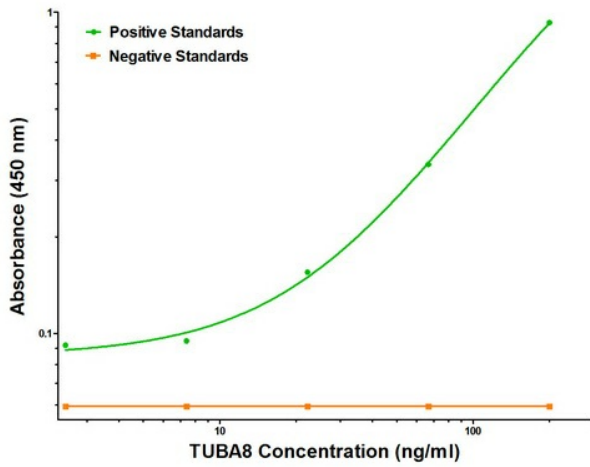
#### Product data:

Product Type:	Primary Antibodies
Clone Name:	OTI3E10
Applications:	ELISA
Recommended Dilution:	ELISA 1:250-1:1000
Reactivity:	Human, Mouse, Rat
Host:	Mouse
Isotype:	IgG1
Clonality:	Monoclonal
Immunogen:	Full length human recombinant protein of human TUBA8 (NM_018943) produced in HEK293T cell.
Formulation:	Stored in PBS (pH 7.4) with 0.05% sodium azide, 10mg/ml BSA, 50% glycerol
Concentration:	0.5 mg/ml
Conjugation:	Biotin
Storage:	Store at -20°C as received.
Stability:	Stable for 12 months from date of receipt.
Gene Name:	tubulin alpha 8
Database Link:	<a href="#">NP_061816</a> <a href="#">Entrez Gene 500377 Rat</a> <a href="#">Entrez Gene 51807 Human</a> <a href="#">Q9NY65</a>
Synonyms:	TUBAL2
Matched ELISA Pair:	TA600519
Protein Families:	Druggable Genome
Protein Pathways:	Gap junction, Pathogenic Escherichia coli infection

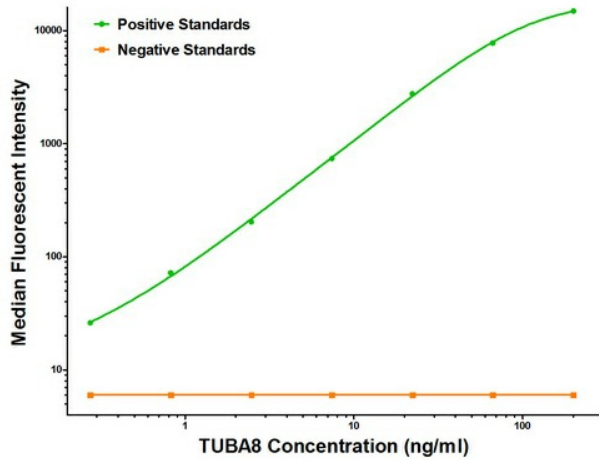


[View online »](#)

**Product images:**



TUBA8 ELISA with 2G6 Capture ([TA600519]) and 3E10 Detection (TA700520) Antibodies. Substrate used: Recombinant Human TUBA8 ([TP311175])



TUBA8 Luminex with 2G6 Capture ([TA600519]) and 3E10 Detection (TA700520) Antibodies. Substrate used: Recombinant Human TUBA8 ([TP311175])