

## Product datasheet for **TA700505**

### **CD20 (MS4A1) Biotinylated Mouse Monoclonal Detection Antibody (Biotin conjugated)** **[Clone ID: OTI4A4]**

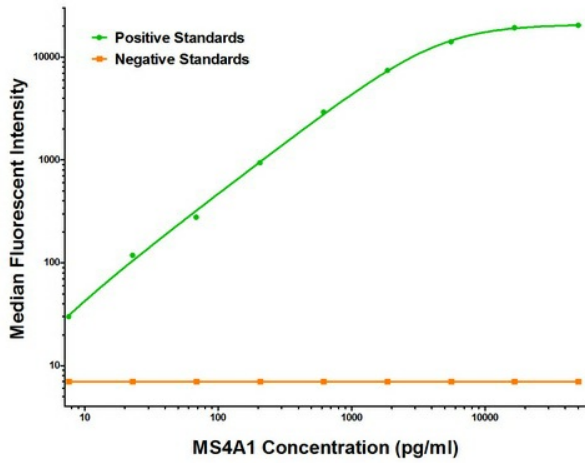
#### Product data:

Product Type:	Primary Antibodies
Clone Name:	OTI4A4
Applications:	ELISA
Recommended Dilution:	ELISA 1:250-1:1000
Reactivity:	Human
Host:	Mouse
Isotype:	IgG1
Clonality:	Monoclonal
Immunogen:	Full length human recombinant protein of human MS4A1 (NM_021950) produced in HEK293T cell.
Formulation:	Stored in PBS (pH 7.4) with 0.05% sodium azide, 10mg/ml BSA, 50% glycerol
Concentration:	0.5 mg/ml
Conjugation:	Biotin
Storage:	Store at -20°C as received.
Stability:	Stable for 12 months from date of receipt.
Gene Name:	membrane spanning 4-domains A1
Database Link:	<a href="#">NP_068769</a> <a href="#">Entrez Gene 931 Human</a> <a href="#">P11836</a>
Synonyms:	B1; Bp35; CD20; CVID5; FMC7; LEU-16; MS4A2; S7
Matched ELISA Pair:	TA600505
Protein Families:	Druggable Genome, Transmembrane
Protein Pathways:	Hematopoietic cell lineage



[View online »](#)

### Product images:



MS4A1 Luminex with 2D3 Capture ([TA600505]) and 4A4 Detection (TA700505) Antibodies. Substrate used: Recombinant Human MS4A1 ([TP301242])