

Product datasheet for **TA700496**

c-Myc (MYC) Biotinylated Mouse Monoclonal Detection Antibody (Biotin conjugated) [Clone ID: OT11A6]

Product data:

| | |
|-----------------------|-----------------------------------------------------------------------------------------------------------------------------------------------------------------------------------------------------------------------------------------------------------------------------------------------------|
| Product Type: | Primary Antibodies |
| Clone Name: | OT11A6 |
| Applications: | ELISA, LMNX |
| Recommended Dilution: | 1:250 - 1:1000 |
| Reactivity: | Human, Mouse, Rat |
| Host: | Mouse |
| Isotype: | IgG1 |
| Clonality: | Monoclonal |
| Immunogen: | Full length human recombinant protein of human MYC (NM_002467) produced in HEK293T cell. |
| Formulation: | Stored in PBS (pH 7.4) with 0.05% sodium azide, 10mg/ml BSA, 50% glycerol |
| Concentration: | 0.5 mg/ml |
| Conjugation: | Biotin |
| Storage: | Store at -20°C as received. |
| Stability: | Stable for 12 months from date of receipt. |
| Gene Name: | MYC proto-oncogene, bHLH transcription factor |
| Database Link: | NP_002458 Entrez Gene 17869 MouseEntrez Gene 24577 RatEntrez Gene 4609 Human P01106 |
| Synonyms: | bHLHe39; c-Myc; MRTL; MYCC |
| Matched ELISA Pair: | TA600496 |
| Protein Families: | Druggable Genome, Embryonic stem cells, Induced pluripotent stem cells, Stem cell - Pluripotency, Stem cell relevant signaling - JAK/STAT signaling pathway, Stem cell relevant signaling - TGFb/BMP signaling pathway, Stem cell relevant signaling - Wnt Signaling pathway, Transcription Factors |

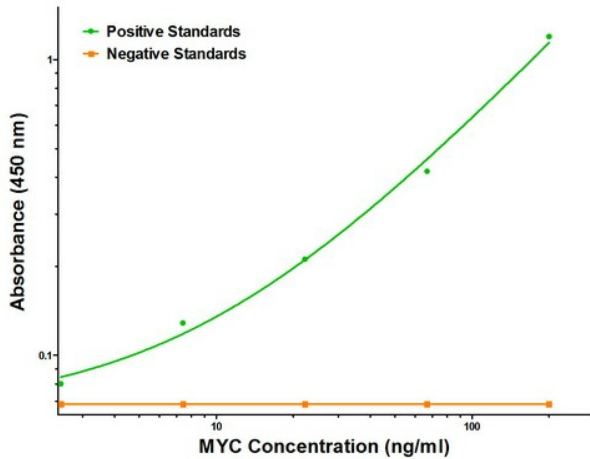


[View online »](#)

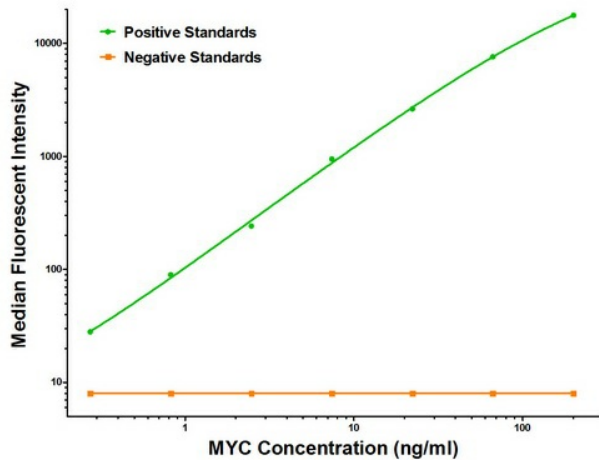
Protein Pathways:

Acute myeloid leukemia, Bladder cancer, Cell cycle, Chronic myeloid leukemia, Colorectal cancer, Endometrial cancer, ErbB signaling pathway, Jak-STAT signaling pathway, MAPK signaling pathway, Pathways in cancer, Small cell lung cancer, TGF-beta signaling pathway, Thyroid cancer, Wnt signaling pathway

Product images:



MYC ELISA with 3F2 Capture ([TA600496]) and 1A6 Detection (TA700496) Antibodies. Substrate used: Recombinant Human MYC ([TP301611])



MYC Luminex ELISA with 3F2 Capture ([TA600496]) and 1A6 Detection (TA700496) Antibodies. Substrate used: Recombinant Human MYC ([TP301611])