

Product datasheet for **TA700495**

SERPINB3 Biotinylated Mouse Monoclonal Detection Antibody (Biotin conjugated) [Clone ID: OT11F10]

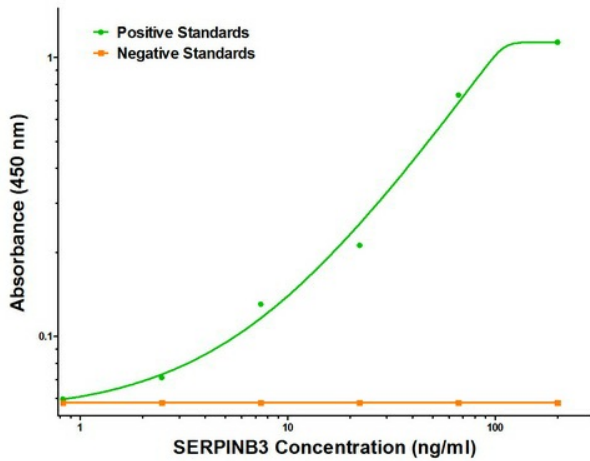
Product data:

Product Type:	Primary Antibodies
Clone Name:	OT11F10
Applications:	ELISA, LMNX
Recommended Dilution:	1:250 - 1:1000
Reactivity:	Human
Host:	Mouse
Isotype:	IgG1
Clonality:	Monoclonal
Immunogen:	Full length human recombinant protein of human SERPINB3 (NM_006919) produced in HEK293T cell.
Formulation:	Stored in PBS (pH 7.4) with 0.05% sodium azide, 10mg/ml BSA, 50% glycerol
Concentration:	0.5 mg/ml
Conjugation:	Biotin
Storage:	Store at -20°C as received.
Stability:	Stable for 12 months from date of receipt.
Gene Name:	serpin family B member 3
Database Link:	NP_008850 Entrez Gene 6317 Human P29508
Synonyms:	HsT1196; SCC; SCCA-1; SCCA-PD; SCCA1; SSCA1; T4-A
Matched ELISA Pair:	TA600494, TA600495
Protein Families:	Druggable Genome, Secreted Protein

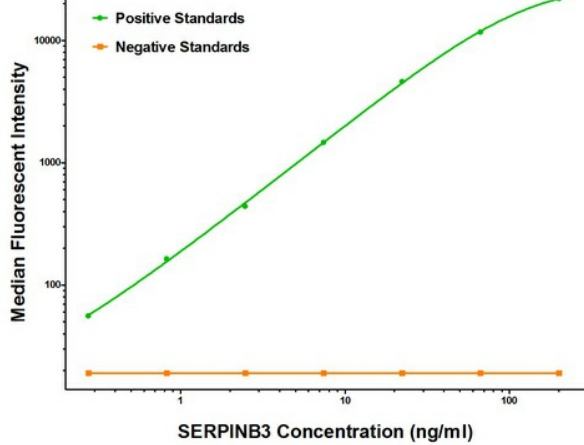


[View online »](#)

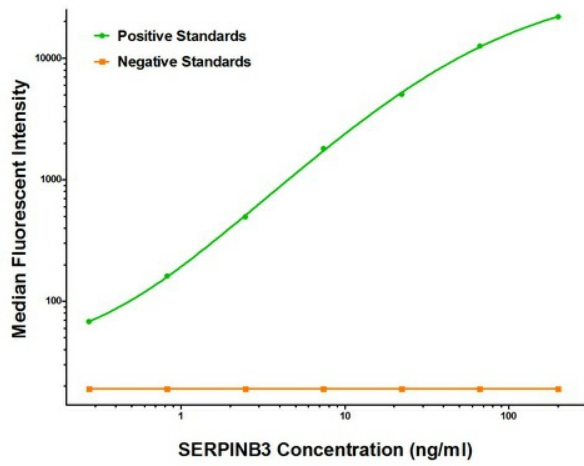
Product images:



SERPINB3 ELISA with 1A12 Capture ([TA600495]) and 1F10 Detection (TA700495) Antibodies. Substrate used: Recombinant Human SERPINB3 ([TP302683])



SERPINB3 Luminex ELISA with 1A12 Capture ([TA600495]) and 1F10 Detection (TA700495) Antibodies. Substrate used: Recombinant Human SERPINB3 ([TP302683])



SERPINB3 Luminex ELISA with 1G5 Capture ([TA600494]) and 1F10 Detection (TA700495) Antibodies. Substrate used: Recombinant Human SERPINB3 ([TP302683])