

## Product datasheet for **TA700494**

### **SERPINB3 Biotinylated Mouse Monoclonal Detection Antibody [Clone ID: OTI1G1]**

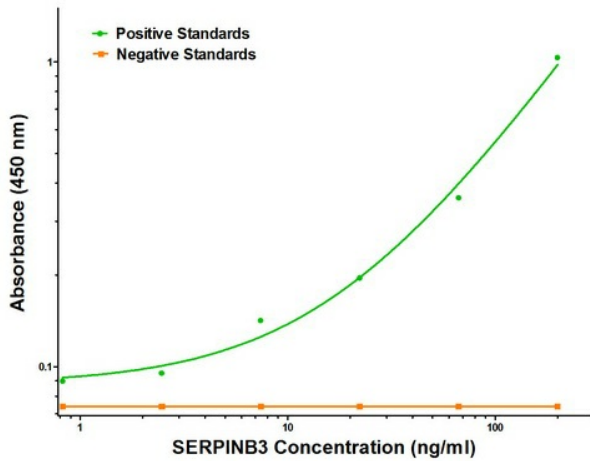
#### **Product data:**

Product Type:	Primary Antibodies
Clone Name:	OTI1G1
Applications:	ELISA, LMNX
Recommended Dilution:	1:250 - 1:1000
Reactivity:	Human
Host:	Mouse
Isotype:	IgG1
Clonality:	Monoclonal
Immunogen:	Full length human recombinant protein of human SERPINB3 (NM_006919) produced in HEK293T cell.
Formulation:	Stored in PBS (pH 7.4) with 0.05% sodium azide, 10mg/ml BSA, 50% glycerol
Concentration:	0.5 mg/ml
Conjugation:	Unconjugated
Storage:	Store at -20°C as received.
Stability:	Stable for 12 months from date of receipt.
Gene Name:	serpin family B member 3
Database Link:	<a href="#">NP_008850</a> <a href="#">Entrez Gene 6317 Human P29508</a>
Synonyms:	HsT1196; SCC; SCCA-1; SCCA-PD; SCCA1; SSCA1; T4-A
Matched ELISA Pair:	TA600493
Protein Families:	Druggable Genome, Secreted Protein

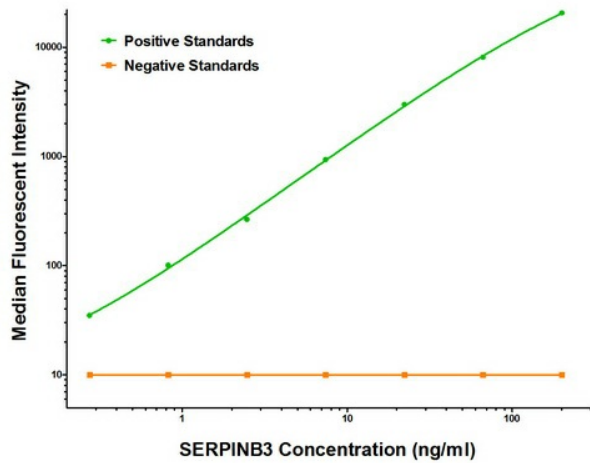


[View online »](#)

Product images:



SERPINB3 ELISA with 1G9 Capture ([TA600493]) and 1G1 Detection (TA700494) Antibodies. Substrate used: Recombinant Human SERPINB3 ([TP302683])



SERPINB3 Luminex ELISA with 1G9 Capture ([TA600493]) and 1G1 Detection (TA700494) Antibodies. Substrate used: Recombinant Human SERPINB3 ([TP302683])