

Product datasheet for **TA700493**

SERPINB3 Biotinylated Mouse Monoclonal Detection Antibody (Biotin conjugated) [Clone ID: OTI2H2]

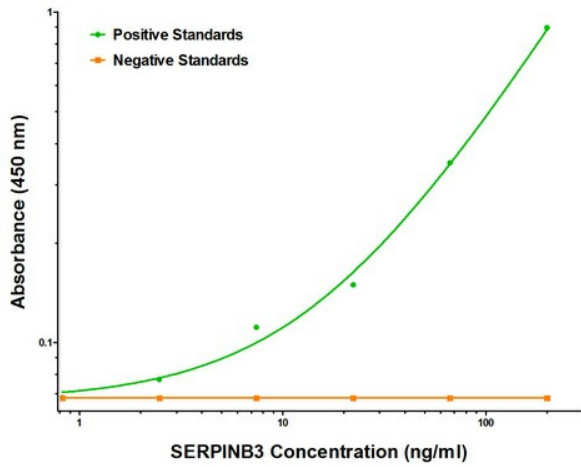
Product data:

| | |
|-----------------------|---|
| Product Type: | Primary Antibodies |
| Clone Name: | OTI2H2 |
| Applications: | ELISA, LMNX |
| Recommended Dilution: | 1:250 - 1:1000 |
| Reactivity: | Human |
| Host: | Mouse |
| Isotype: | IgG1 |
| Clonality: | Monoclonal |
| Immunogen: | Full length human recombinant protein of human SERPINB3 (NM_006919) produced in HEK293T cell. |
| Formulation: | Stored in PBS (pH 7.4) with 0.05% sodium azide, 10mg/ml BSA, 50% glycerol |
| Concentration: | 0.5 mg/ml |
| Conjugation: | Biotin |
| Storage: | Store at -20°C as received. |
| Stability: | Stable for 12 months from date of receipt. |
| Gene Name: | serpin family B member 3 |
| Database Link: | NP_008850 Entrez Gene 6317 Human P29508 |
| Synonyms: | HsT1196; SCC; SCCA-1; SCCA-PD; SCCA1; SSCA1; T4-A |
| Matched ELISA Pair: | TA600493 |
| Protein Families: | Druggable Genome, Secreted Protein |

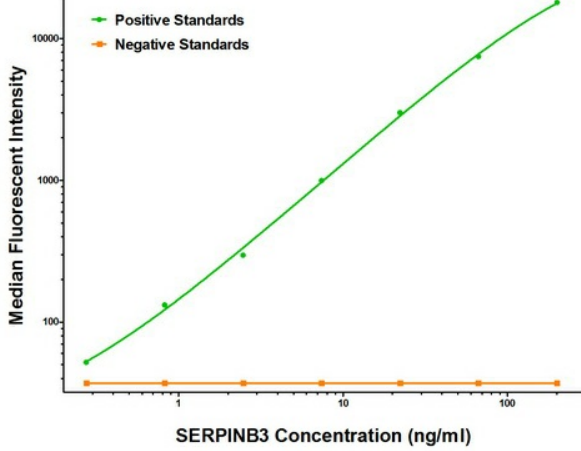


[View online »](#)

Product images:



SERPINB3 ELISA with 1G9 Capture ([TA600493]) and 2H2 Detection (TA700493) Antibodies. Substrate used: Recombinant Human SERPINB3 ([TP302683])



SERPINB3 Luminex ELISA with 1G9 Capture ([TA600493]) and 2H2 Detection (TA700493) Antibodies. Substrate used: Recombinant Human SERPINB3 ([TP302683])