

Product datasheet for **TA700488**

SOX5 Biotinylated Mouse Monoclonal Detection Antibody (Biotin conjugated) [Clone ID: OTI6B5]

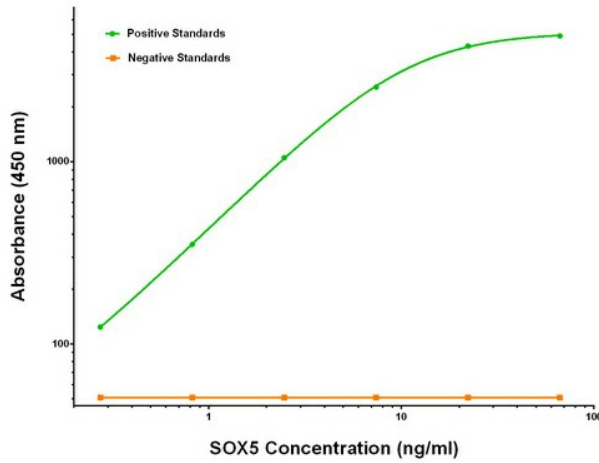
Product data:

Product Type:	Primary Antibodies
Clone Name:	OTI6B5
Applications:	LMNX
Recommended Dilution:	1:250 - 1:1000
Reactivity:	Human, Mouse, Rat
Host:	Mouse
Isotype:	IgG1
Clonality:	Monoclonal
Immunogen:	Full length human recombinant protein of human SOX5 (NM_006940) produced in HEK293T cell.
Formulation:	Stored in PBS (pH 7.4) with 0.05% sodium azide, 10mg/ml BSA, 50% glycerol
Concentration:	0.5 mg/ml
Conjugation:	Biotin
Storage:	Store at -20°C as received.
Stability:	Stable for 12 months from date of receipt.
Gene Name:	SRY-box transcription factor 5
Database Link:	NP_008871 Entrez Gene 20678 Mouse Entrez Gene 140587 Rat Entrez Gene 6660 Human P35711
Synonyms:	L-SOX5; L-SOX5B; L-SOX5F; LAMSHF
Matched ELISA Pair:	TA600050
Protein Families:	Transcription Factors



[View online »](#)

Product images:



SOX5 Luminex ELISA with Anti-DDK 1B12 Capture ([TA600050]) and 6B5 Detection (TA700488) Antibodies. Substrate used: Recombinant Human SOX5 ([TP324228])