

Product datasheet for **TA700484**

HES1 Biotinylated Mouse Monoclonal Detection Antibody [Clone ID: OTI1B5]

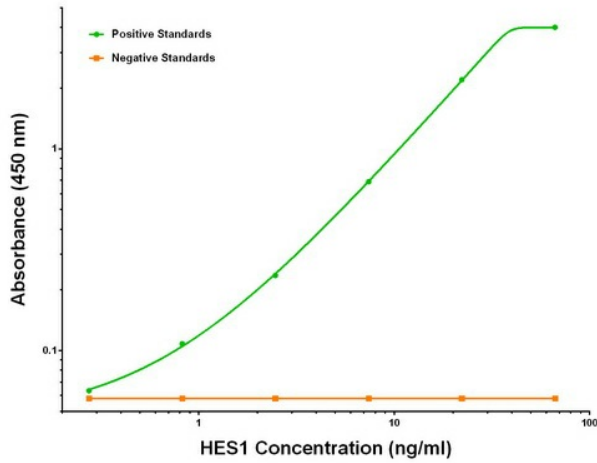
Product data:

Product Type:	Primary Antibodies
Clone Name:	OTI1B5
Applications:	ELISA, LMNX
Recommended Dilution:	1:250 - 1:1000
Reactivity:	Human, Mouse, Rat
Host:	Mouse
Isotype:	IgG1
Clonality:	Monoclonal
Immunogen:	Full length human recombinant protein of human HES1 (NM_005524) produced in HEK293T cell.
Formulation:	Stored in PBS (pH 7.4) with 0.05% sodium azide, 10mg/ml BSA, 50% glycerol
Concentration:	0.5 mg/ml
Conjugation:	Unconjugated
Storage:	Store at -20°C as received.
Stability:	Stable for 12 months from date of receipt.
Gene Name:	hes family bHLH transcription factor 1
Database Link:	NP_005515 Entrez Gene 15205 Mouse Entrez Gene 29577 Rat Entrez Gene 3280 Human Q14469
Synonyms:	bHLHb39; HES-1; HHL; HRY
Matched ELISA Pair:	TA600483, TA600485
Protein Families:	Adult stem cells, Cancer stem cells, Druggable Genome, ES Cell Differentiation/IPS, Stem cell relevant signaling - DSL/Notch pathway, Transcription Factors
Protein Pathways:	Maturity onset diabetes of the young, Notch signaling pathway

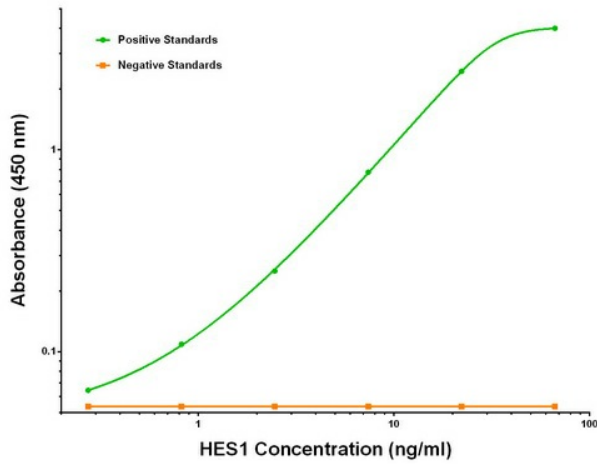


[View online »](#)

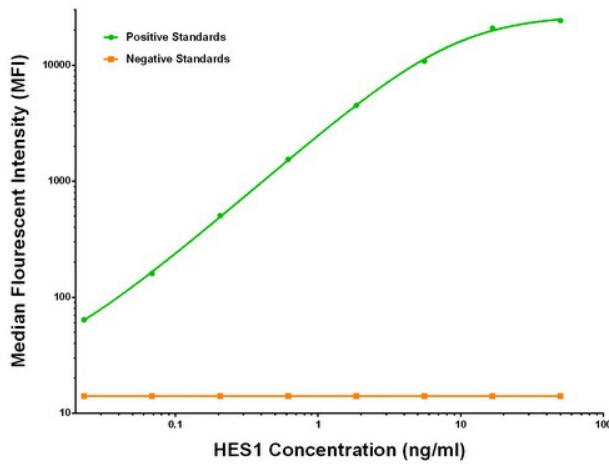
Product images:



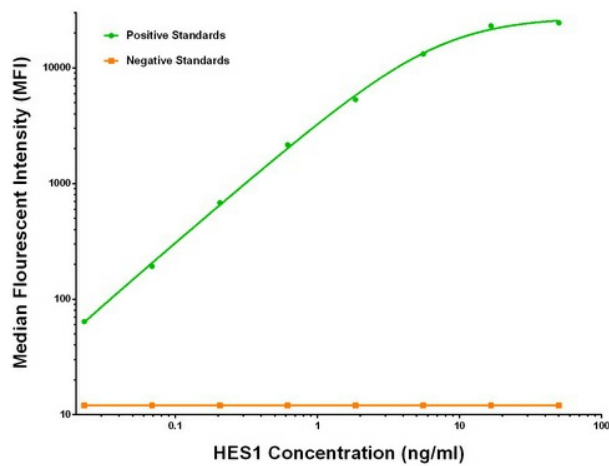
HES1 ELISA with 1F11 Capture ([TA600485]) and 1B5 Detection (TA700484) Antibodies. Substrate used: Recombinant Human HES1 ([TP311709])



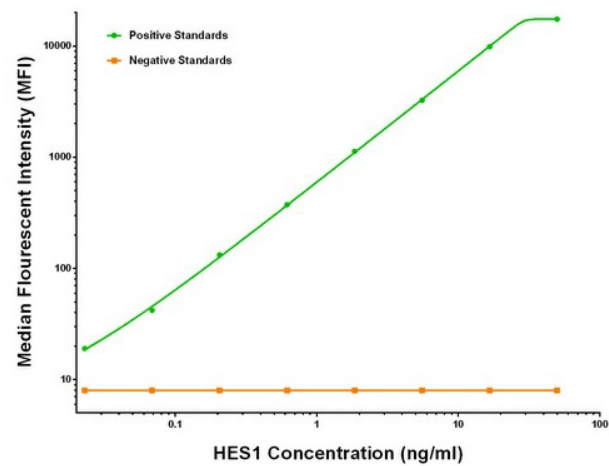
HES1 ELISA with 2D2 Capture ([TA600483]) and 1B5 Detection (TA700484) Antibodies. Substrate used: Recombinant Human HES1 ([TP311709])



HES1 Luminex ELISA with 1F11 Capture ([TA600485]) and 1B5 Detection (TA700484) Antibodies. Substrate used: Recombinant Human HES1 ([TP311709])



HES1 Luminex ELISA with 2D2 Capture ([TA600483]) and 1B5 Detection (TA700484) Antibodies. Substrate used: Recombinant Human HES1 ([TP311709])



HES1 Luminex ELISA with 7B9 Capture ([TA600484]) and 1B5 Detection (TA700484) Antibodies. Substrate used: Recombinant Human HES1 ([TP311709])