

Product datasheet for **TA700479**

GOLPH2 (GOLM1) Biotinylated Mouse Monoclonal Detection Antibody (Biotin conjugated) **[Clone ID: OTI2F3]**

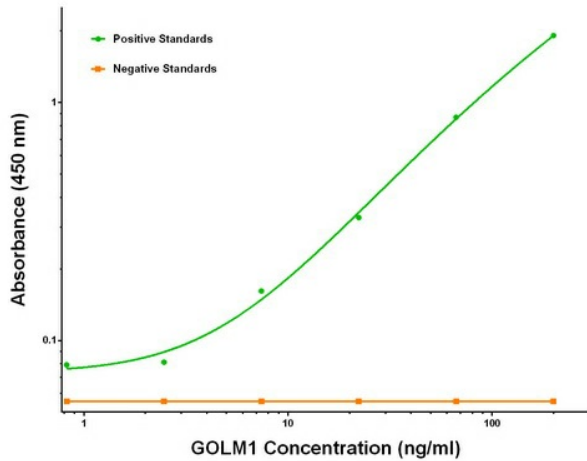
Product data:

Product Type:	Primary Antibodies
Clone Name:	OTI2F3
Applications:	ELISA, LMNX
Recommended Dilution:	1:250 - 1:1000
Reactivity:	Human
Host:	Mouse
Isotype:	IgG1
Clonality:	Monoclonal
Immunogen:	Full length human recombinant protein of human GOLM1 (NM_016548) produced in HEK293T cell.
Formulation:	Stored in PBS (pH 7.4) with 0.05% sodium azide, 10mg/ml BSA, 50% glycerol
Concentration:	0.5 mg/ml
Conjugation:	Biotin
Storage:	Store at -20°C as received.
Stability:	Stable for 12 months from date of receipt.
Gene Name:	golgi membrane protein 1
Database Link:	NP_057632 Entrez Gene 51280 Human Q8NBJ4
Synonyms:	bA379P1.3; C9orf155; GOLPH2; GP73; HEL46; PSEC0257
Matched ELISA Pair:	TA600479
Protein Families:	Transmembrane

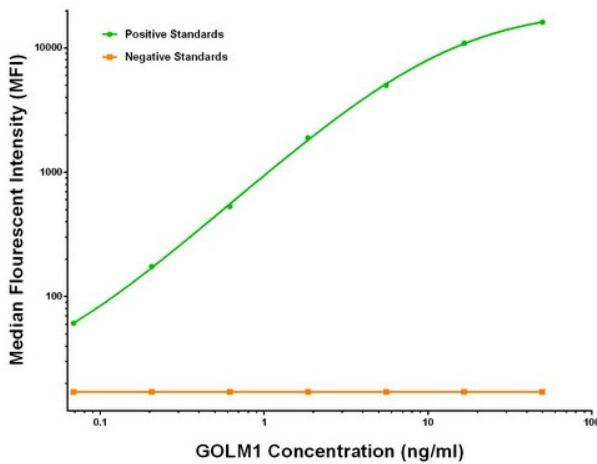


[View online »](#)

Product images:



GOLM1 ELISA with 2D6 Capture ([TA600479]) and 2F3 Detection (TA700479) Antibodies. Substrate used: Recombinant Human GOLM1 ([TP314745])



GOLM1 Luminex ELISA with 2D6 Capture ([TA600479]) and 2F3 Detection (TA700479) Antibodies. Substrate used: Recombinant Human GOLM1 ([TP314745])