

## Product datasheet for **TA700476**

### Fibrinogen gamma chain (FGG) Biotinylated Mouse Monoclonal Detection Antibody (Biotin conjugated) [Clone ID: OTI2B6]

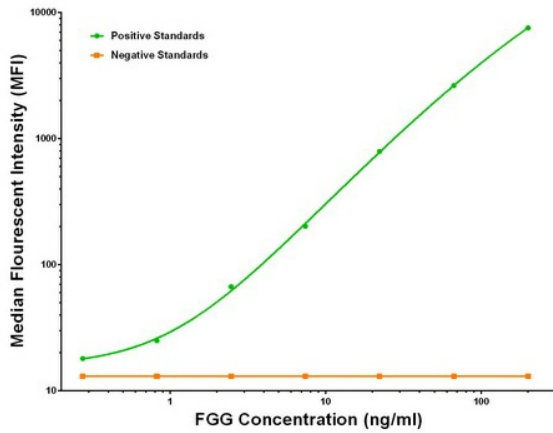
#### Product data:

Product Type:	Primary Antibodies
Clone Name:	OTI2B6
Applications:	LMNX
Recommended Dilution:	1:250 - 1:1000
Reactivity:	Human
Host:	Mouse
Isotype:	IgG1
Clonality:	Monoclonal
Immunogen:	Full length human recombinant protein of human FGG (NM_000509) produced in HEK293T cell.
Formulation:	Stored in PBS (pH 7.4) with 0.05% sodium azide, 10mg/ml BSA, 50% glycerol
Concentration:	0.5 mg/ml
Conjugation:	Biotin
Storage:	Store at -20°C as received.
Stability:	Stable for 12 months from date of receipt.
Gene Name:	fibrinogen gamma chain
Database Link:	<a href="#">NP_000500</a> <a href="#">Entrez Gene 2266 Human P02679</a>
Synonyms:	fibrinogen; fibrinogen gamma chain; gamma chain; gamma polypeptide
Matched ELISA Pair:	TA600476, TA600477, TA600478
Protein Families:	Druggable Genome, Secreted Protein, Transmembrane
Protein Pathways:	Complement and coagulation cascades

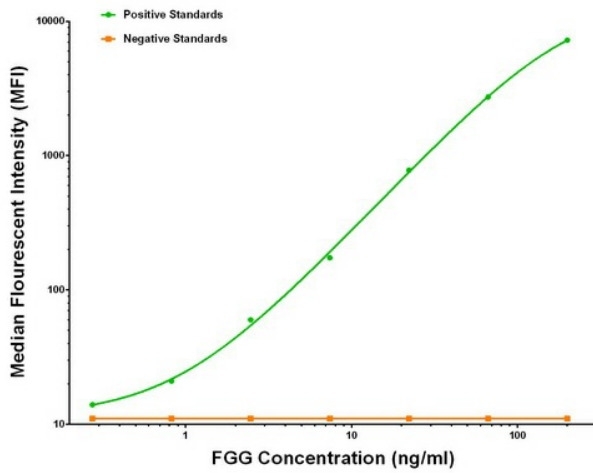


[View online »](#)

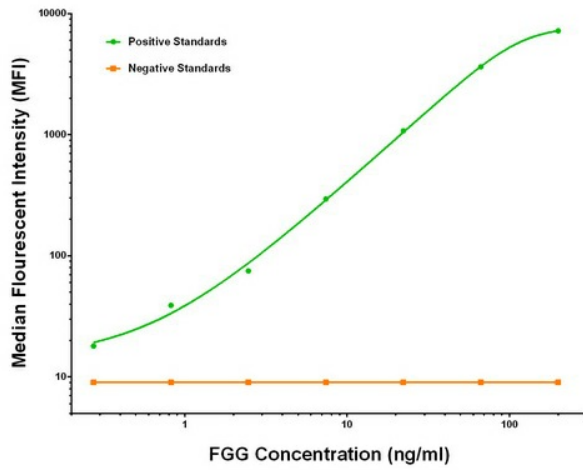
Product images:



FGG Luminex ELISA with 1F5 Capture ([TA600476]) and 2B6 Detection (TA700476) Antibodies. Substrate used: Recombinant Human FGG ([TP302770])



FGG Luminex ELISA with 4B8 Capture ([TA600477]) and 2B6 Detection (TA700476) Antibodies. Substrate used: Recombinant Human FGG ([TP302770])



FGG Luminex ELISA with 2B6 Capture ([TA600478]) and 2B6 Detection (TA700476) Antibodies. Substrate used: Recombinant Human FGG ([TP302770])