

Product datasheet for **TA700475**

CD5 Biotinylated Mouse Monoclonal Detection Antibody (Biotin conjugated) [Clone ID: OTI2G8]

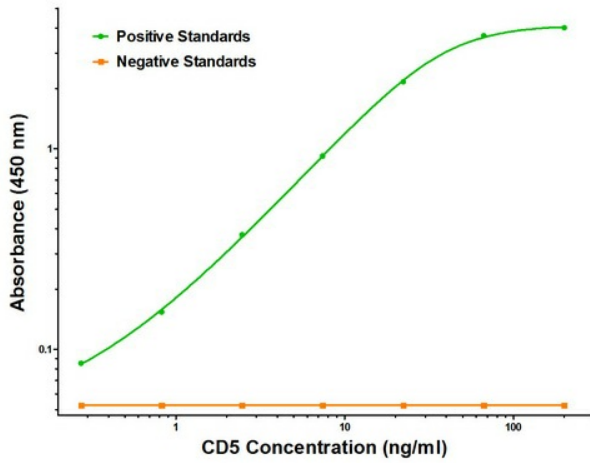
Product data:

Product Type:	Primary Antibodies
Clone Name:	OTI2G8
Applications:	ELISA
Recommended Dilution:	ELISA 1:250-1:1000
Reactivity:	Human
Host:	Mouse
Isotype:	IgG1
Clonality:	Monoclonal
Immunogen:	Full length human recombinant protein of human CD5 (NM_014207) produced in HEK293T cell.
Formulation:	Stored in PBS (pH 7.4) with 0.05% sodium azide, 10mg/ml BSA, 50% glycerol
Concentration:	0.5 mg/ml
Conjugation:	Biotin
Storage:	Store at -20°C as received.
Stability:	Stable for 12 months from date of receipt.
Gene Name:	CD5 molecule
Database Link:	NP_055022 Entrez Gene 921 Human P06127
Synonyms:	LEU1; T1
Matched ELISA Pair:	TA600468
Protein Families:	Druggable Genome, Transmembrane
Protein Pathways:	Hematopoietic cell lineage

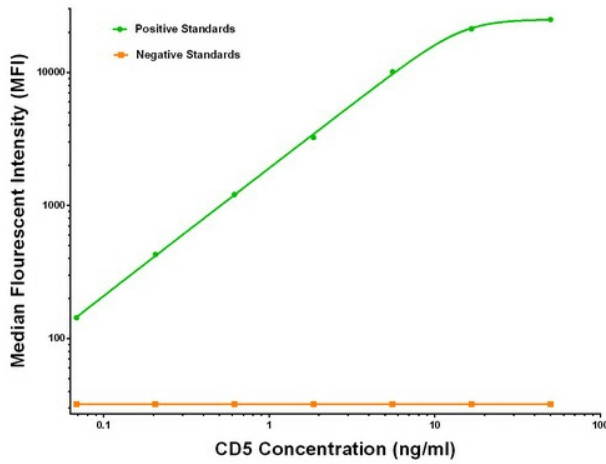


[View online »](#)

Product images:



CD5 ELISA with 6F7 Capture ([TA600468]) and 2G8 Detection (TA700475) Antibodies. Substrate used: Recombinant Human CD5 ([TP306494])



CD5 Luminex ELISA with 6F7 Capture ([TA600468]) and 2G8 Detection (TA700475) Antibodies. Substrate used: Recombinant Human CD5 ([TP306494])