

## Product datasheet for **TA700473**

### **EGFR Biotinylated Mouse Monoclonal Detection Antibody (Biotin conjugated) [Clone ID: OTI1B10]**

#### **Product data:**

|                              |  |
|------------------------------|--|
| <b>Product Type:</b>         | Primary Antibodies   |
| <b>Clone Name:</b>           | OTI1B10  |
| <b>Applications:</b>         | ELISA  |
| <b>Recommended Dilution:</b> | ELISA 1:250-1:1000   |
| <b>Reactivity:</b>           | Human, Mouse, Rat  |
| <b>Host:</b>                 | Mouse  |
| <b>Isotype:</b>              | IgG1   |
| <b>Clonality:</b>            | Monoclonal   |
| <b>Immunogen:</b>            | Full length human recombinant protein of human EGFR (NM_201283) produced in HEK293T cell.  |
| <b>Formulation:</b>          | Stored in PBS (pH 7.4) with 0.05% sodium azide, 10mg/ml BSA, 50% glycerol  |
| <b>Concentration:</b>        | 0.5 mg/ml  |
| <b>Conjugation:</b>          | Biotin   |
| <b>Storage:</b>              | Store at -20°C as received.  |
| <b>Stability:</b>            | Stable for 12 months from date of receipt.   |
| <b>Gene Name:</b>            | epidermal growth factor receptor   |
| <b>Database Link:</b>        | <a href="#">NP_958440</a><br><a href="#">Entrez Gene 13649 MouseEntrez Gene 24329 RatEntrez Gene 1956 Human P00533</a>   |
| <b>Synonyms:</b>             | ERBB; ERBB1; ERRP; HER1; mENA; NISBD2; PIG61   |
| <b>Matched ELISA Pair:</b>   | TA600474   |
| <b>Protein Families:</b>     | Adult stem cells, Cancer stem cells, Druggable Genome, ES Cell Differentiation/IPS, Protein Kinase, Secreted Protein, Stem cell relevant signaling - JAK/STAT signaling pathway, Transmembrane |

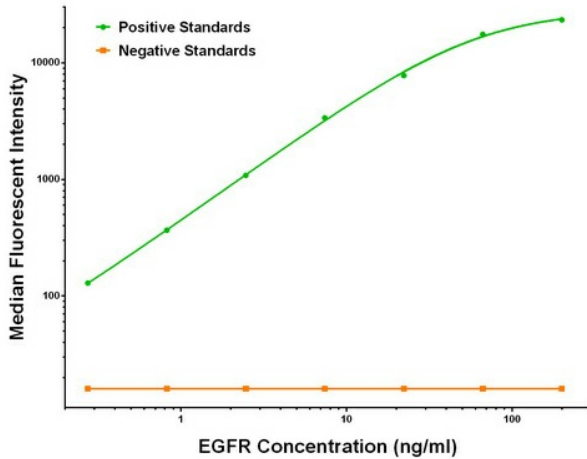


[View online »](#)

**Protein Pathways:**

Adherens junction, Bladder cancer, Calcium signaling pathway, Colorectal cancer, Cytokine-cytokine receptor interaction, Dorso-ventral axis formation, Endocytosis, Endometrial cancer, Epithelial cell signaling in Helicobacter pylori infection, ErbB signaling pathway, Focal adhesion, Gap junction, Glioma, GnRH signaling pathway, MAPK signaling pathway, Melanoma, Non-small cell lung cancer, Pancreatic cancer, Pathways in cancer, Prostate cancer, Regulation of actin cytoskeleton

**Product images:**



EGFR Luminex ELISA with 11H7 Capture ([TA600474]) and 1B10 Detection (TA700473) Antibodies. Substrate used: Recombinant Human EGFR ([TP314877])