

Product datasheet for **TA700471**

EGFR Biotinylated Mouse Monoclonal Detection Antibody (Biotin conjugated) [Clone ID: OTI1C8]

Product data:

Product Type:	Primary Antibodies
Clone Name:	OTI1C8
Applications:	ELISA
Recommended Dilution:	ELISA 1:250-1:1000
Reactivity:	Human, Mouse, Rat
Host:	Mouse
Isotype:	IgG1
Clonality:	Monoclonal
Immunogen:	Full length human recombinant protein of human EGFR (NM_201283) produced in HEK293T cell.
Formulation:	Stored in PBS (pH 7.4) with 0.05% sodium azide, 10mg/ml BSA, 50% glycerol
Concentration:	0.5 mg/ml
Conjugation:	Biotin
Storage:	Store at -20°C as received.
Stability:	Stable for 12 months from date of receipt.
Gene Name:	epidermal growth factor receptor
Database Link:	NP_958440 Entrez Gene 13649 MouseEntrez Gene 24329 RatEntrez Gene 1956 Human P00533
Synonyms:	ERBB; ERBB1; ERRP; HER1; mENA; NISBD2; PIG61
Matched ELISA Pair:	TA600471
Protein Families:	Adult stem cells, Cancer stem cells, Druggable Genome, ES Cell Differentiation/IPS, Protein Kinase, Secreted Protein, Stem cell relevant signaling - JAK/STAT signaling pathway, Transmembrane

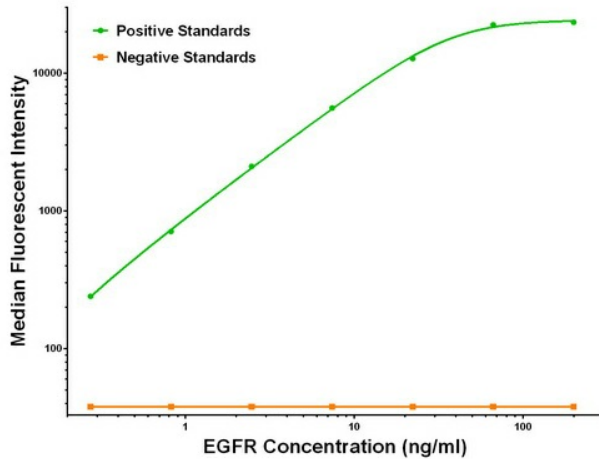


[View online »](#)

Protein Pathways:

Adherens junction, Bladder cancer, Calcium signaling pathway, Colorectal cancer, Cytokine-cytokine receptor interaction, Dorso-ventral axis formation, Endocytosis, Endometrial cancer, Epithelial cell signaling in Helicobacter pylori infection, ErbB signaling pathway, Focal adhesion, Gap junction, Glioma, GnRH signaling pathway, MAPK signaling pathway, Melanoma, Non-small cell lung cancer, Pancreatic cancer, Pathways in cancer, Prostate cancer, Regulation of actin cytoskeleton

Product images:



EGFR Luminex ELISA with 2E1 Capture ([TA600471]) and 1C8 Detection (TA700471) Antibodies. Substrate used: Recombinant Human EGFR ([TP314877])