

Product datasheet for **TA700469**

EGFR Biotinylated Mouse Monoclonal Detection Antibody (Biotin conjugated) [Clone ID: OTI2E1]

Product data:

| | |
|-----------------------|--|
| Product Type: | Primary Antibodies |
| Clone Name: | OTI2E1 |
| Applications: | ELISA |
| Recommended Dilution: | ELISA 1:250-1:1000 |
| Reactivity: | Human, Mouse, Rat |
| Host: | Mouse |
| Isotype: | IgG1 |
| Clonality: | Monoclonal |
| Immunogen: | Full length human recombinant protein of human EGFR (NM_201283) produced in HEK293T cell. |
| Formulation: | Stored in PBS (pH 7.4) with 0.05% sodium azide, 10mg/ml BSA, 50% glycerol |
| Concentration: | 0.5 mg/ml |
| Conjugation: | Biotin |
| Storage: | Store at -20°C as received. |
| Stability: | Stable for 12 months from date of receipt. |
| Gene Name: | epidermal growth factor receptor |
| Database Link: | NP_958440 Entrez Gene 13649 MouseEntrez Gene 24329 RatEntrez Gene 1956 Human P00533 |
| Synonyms: | ERBB; ERBB1; ERRP; HER1; mENA; NISBD2; PIG61 |
| Matched ELISA Pair: | TA600469, TA600472 |
| Protein Families: | Adult stem cells, Cancer stem cells, Druggable Genome, ES Cell Differentiation/IPS, Protein Kinase, Secreted Protein, Stem cell relevant signaling - JAK/STAT signaling pathway, Transmembrane |

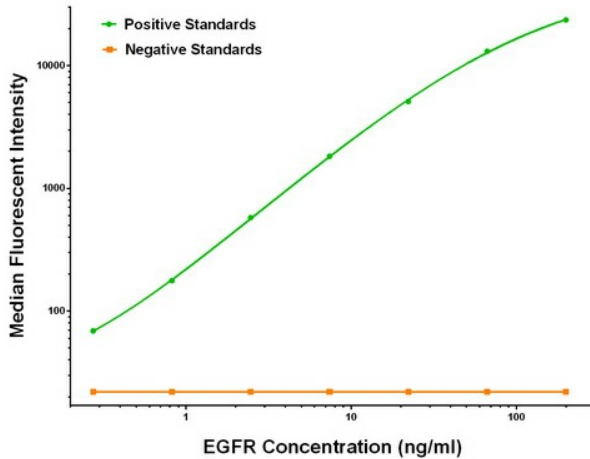


[View online »](#)

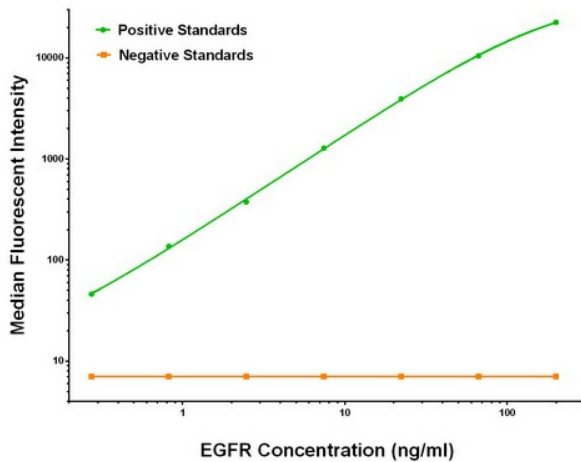
Protein Pathways:

Adherens junction, Bladder cancer, Calcium signaling pathway, Colorectal cancer, Cytokine-cytokine receptor interaction, Dorso-ventral axis formation, Endocytosis, Endometrial cancer, Epithelial cell signaling in Helicobacter pylori infection, ErbB signaling pathway, Focal adhesion, Gap junction, Glioma, GnRH signaling pathway, MAPK signaling pathway, Melanoma, Non-small cell lung cancer, Pancreatic cancer, Pathways in cancer, Prostate cancer, Regulation of actin cytoskeleton

Product images:



EGFR Luminex ELISA with 1B10 Capture ([TA600469]) and 2E1 Detection (TA700469) Antibodies. Substrate used: Recombinant Human EGFR ([TP314877])



EGFR Luminex ELISA with 3D7 Capture ([TA600472]) and 2E1 Detection (TA700469) Antibodies. Substrate used: Recombinant Human EGFR ([TP314877])