

## Product datasheet for **TA700460**

### **NM23A (NME1) Biotinylated Mouse Monoclonal Detection Antibody (Biotin conjugated)** **[Clone ID: OTI7F2]**

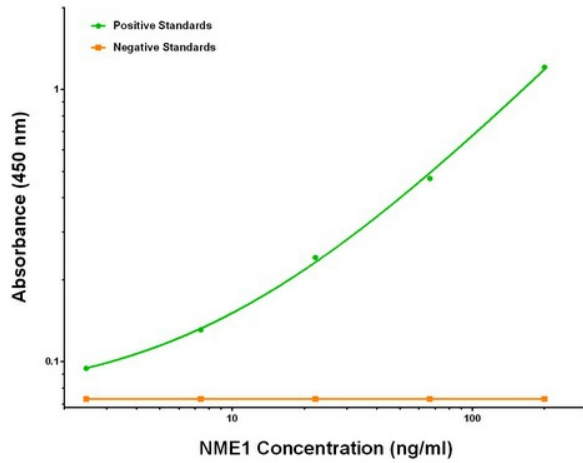
#### Product data:

Product Type:	Primary Antibodies
Clone Name:	OTI7F2
Applications:	ELISA
Recommended Dilution:	ELISA 1:250-1:1000
Reactivity:	Human, Mouse, Rat
Host:	Mouse
Isotype:	IgG1
Clonality:	Monoclonal
Immunogen:	Full length human recombinant protein of human NME1 (NM_000269) produced in HEK293T cell.
Formulation:	Stored in PBS (pH 7.4) with 0.05% sodium azide, 10mg/ml BSA, 50% glycerol
Concentration:	0.5 mg/ml
Conjugation:	Biotin
Storage:	Store at -20°C as received.
Stability:	Stable for 12 months from date of receipt.
Gene Name:	NME/NM23 nucleoside diphosphate kinase 1
Database Link:	<a href="#">NP_000260</a> <a href="#">Entrez Gene 18102 MouseEntrez Gene 191575 RatEntrez Gene 4830 Human P15531</a>
Synonyms:	AWD; GAAD; NB; NBS; NDKA; NDPK-A; NDPKA; NM23; NM23-H1
Matched ELISA Pair:	TA600459
Protein Families:	Druggable Genome, Stem cell - Pluripotency
Protein Pathways:	Metabolic pathways, Purine metabolism, Pyrimidine metabolism

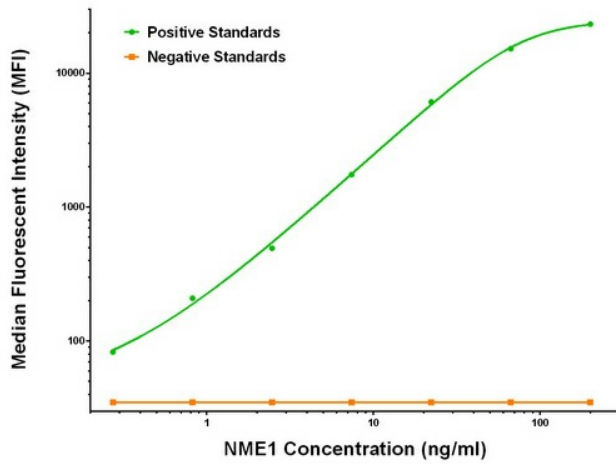


[View online »](#)

Product images:



NME1 ELISA with 1A12 Capture ([TA600459]) and 7F2 Detection (TA700460) Antibodies. Substrate used: Recombinant Human NME1 ([TP301731])



NME1 Luminex ELISA with 1A12 Capture ([TA600459]) and 7F2 Detection (TA700460) Antibodies. Substrate used: Recombinant Human NME1 ([TP301731])