

## Product datasheet for **TA700452**

### **MAGEA3 Biotinylated Mouse Monoclonal Detection Antibody (Biotin conjugated) [Clone ID: OTI2B1]**

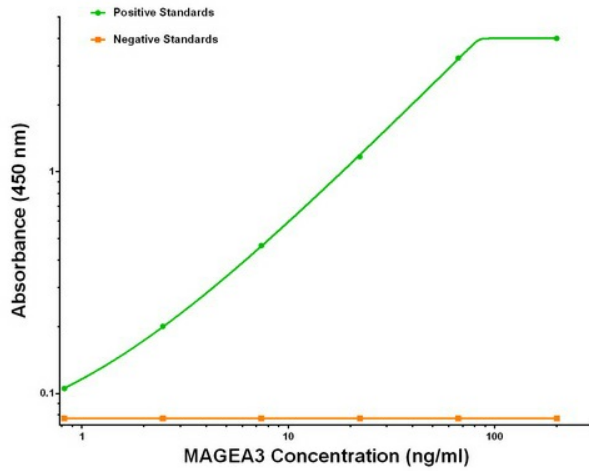
#### **Product data:**

Product Type:	Primary Antibodies
Clone Name:	OTI2B1
Applications:	ELISA
Recommended Dilution:	ELISA 1:250-1:1000
Reactivity:	Human
Host:	Mouse
Isotype:	IgG1
Clonality:	Monoclonal
Immunogen:	Full length human recombinant protein of human MAGEA3 (NM_005362) produced in HEK293T cell.
Formulation:	Stored in PBS (pH 7.4) with 0.05% sodium azide, 10mg/ml BSA, 50% glycerol
Concentration:	0.5 mg/ml
Conjugation:	Biotin
Storage:	Store at -20°C as received.
Stability:	Stable for 12 months from date of receipt.
Gene Name:	MAGE family member A3
Database Link:	<a href="#">NP_005353</a> <a href="#">Entrez Gene 4102 Human P43357</a>
Synonyms:	CT1.3; HIP8; HYPD; MAGE3; MAGEA6
Matched ELISA Pair:	TA600452

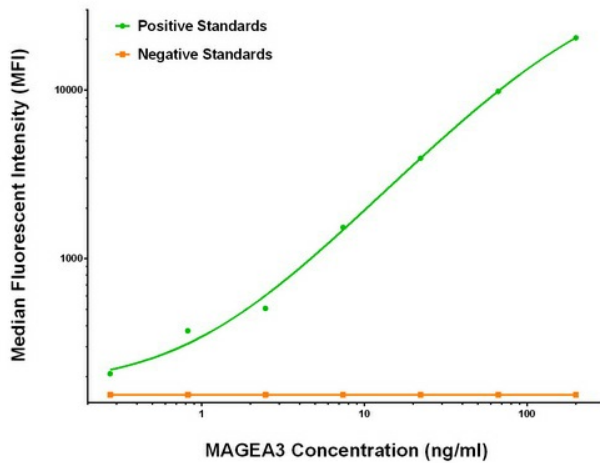


[View online »](#)

Product images:



MAGEA3 ELISA with 1A10 Capture ([TA600452]) and 2B1 Detection (TA700452) Antibodies. Substrate used: Recombinant Human MAGEA3 ([TP303288])



MAGEA3 Luminex ELISA with 1A10 Capture ([TA600452]) and 2B1 Detection (TA700452) Antibodies. Substrate used: Recombinant Human MAGEA3 ([TP303288])