

Product datasheet for **TA700448**

CA12 Biotinylated Mouse Monoclonal Detection Antibody (Biotin conjugated) [Clone ID: OTI4G3]

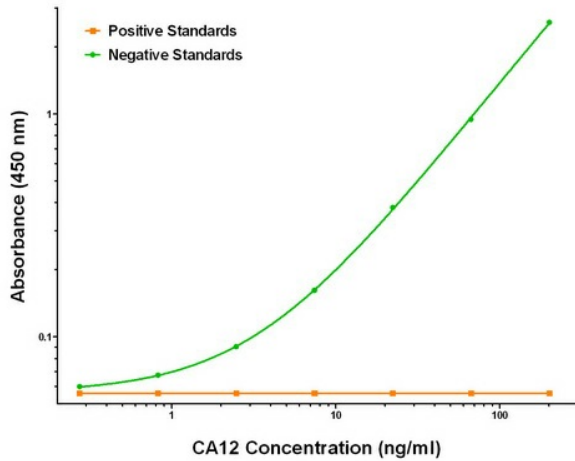
Product data:

Product Type:	Primary Antibodies
Clone Name:	OTI4G3
Applications:	ELISA, LMNX
Recommended Dilution:	1:250 - 1:1000
Reactivity:	Human
Host:	Mouse
Isotype:	IgG1
Clonality:	Monoclonal
Immunogen:	Full length human recombinant protein of human CA12 (NM_001218) produced in HEK293T cell.
Formulation:	Stored in PBS (pH 7.4) with 0.05% sodium azide, 10mg/ml BSA, 50% glycerol
Concentration:	0.5 mg/ml
Conjugation:	Biotin
Storage:	Store at -20°C as received.
Stability:	Stable for 12 months from date of receipt.
Gene Name:	carbonic anhydrase 12
Database Link:	NP_001209 Entrez Gene 771 Human O43570
Synonyms:	CAXII; HsT18816
Matched ELISA Pair:	TA600448, TA600450
Protein Families:	Druggable Genome, Transmembrane
Protein Pathways:	Nitrogen metabolism

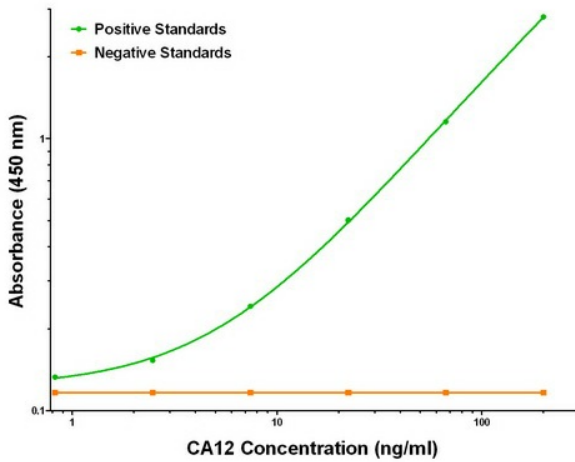


[View online »](#)

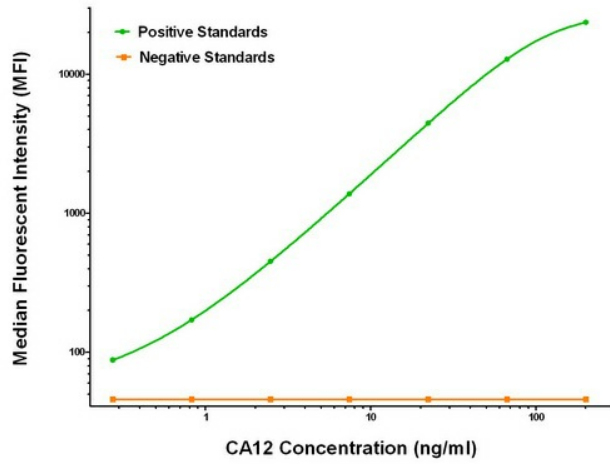
Product images:



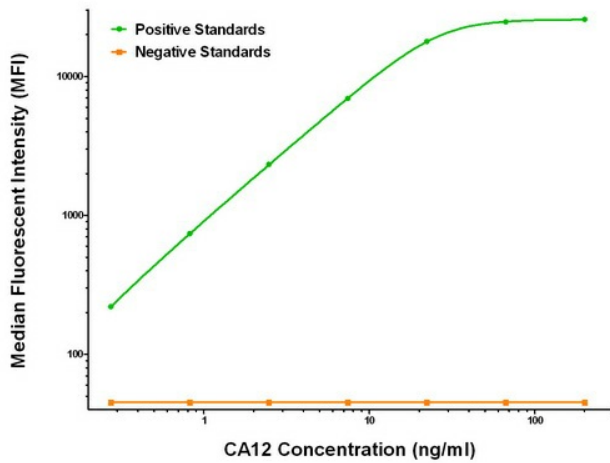
CA12 ELISA with 1A6 Capture ([TA600448]) and 4G3 Detection (TA700448) Antibodies. Substrate used: Recombinant Human CA12 ([TP304810])



CA12 ELISA with 4D1 Capture ([TA600450]) and 4G3 Detection (TA700448) Antibodies. Substrate used: Recombinant Human CA12 ([TP304810])



CA12 Luminex ELISA with 1A6 Capture ([TA600448]) and 4G3 Detection (TA700448) Antibodies. Substrate used: Recombinant Human CA12 ([TP304810])



CA12 Luminex ELISA with 4D1 Capture ([TA600450]) and 4G3 Detection (TA700448) Antibodies. Substrate used: Recombinant Human CA12 ([TP304810])