

Product datasheet for **TA700445**

EMA (MUC1) Biotinylated Mouse Monoclonal Detection Antibody (Biotin conjugated) [Clone ID: OTI2E3]

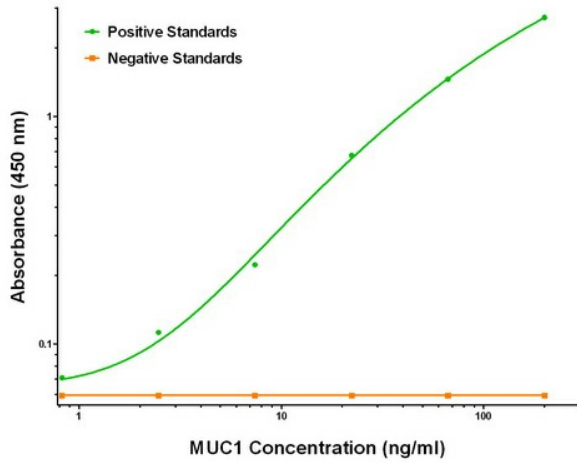
Product data:

Product Type:	Primary Antibodies
Clone Name:	OTI2E3
Applications:	ELISA, LMNX
Recommended Dilution:	1:250 - 1:1000
Reactivity:	Human
Host:	Mouse
Isotype:	IgG1
Clonality:	Monoclonal
Immunogen:	Full length human recombinant protein of human MUC1 (NM_001018016) produced in HEK293T cell.
Formulation:	Stored in PBS (pH 7.4) with 0.05% sodium azide, 10mg/ml BSA, 50% glycerol
Concentration:	0.5 mg/ml
Conjugation:	Biotin
Storage:	Store at -20°C as received.
Stability:	Stable for 12 months from date of receipt.
Gene Name:	mucin 1, cell surface associated
Database Link:	NP_001018016 Entrez Gene 4582 Human P15941
Synonyms:	ADMCKD; ADMCKD1; CA 15-3; CD227; EMA; H23AG; KL-6; MAM6; MCD; MCKD; MCKD1; MUC-1; SEC
Matched ELISA Pair:	TA600445, TA600446, TA600447
Protein Families:	Druggable Genome, Secreted Protein, Transmembrane

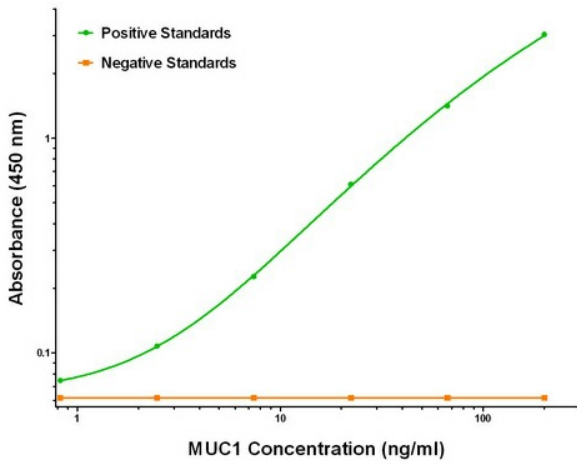


[View online »](#)

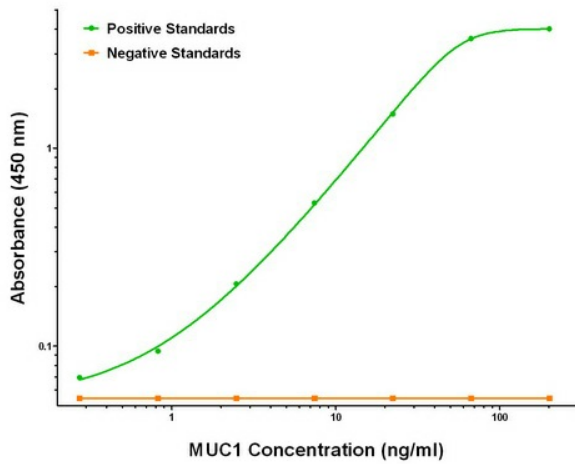
Product images:



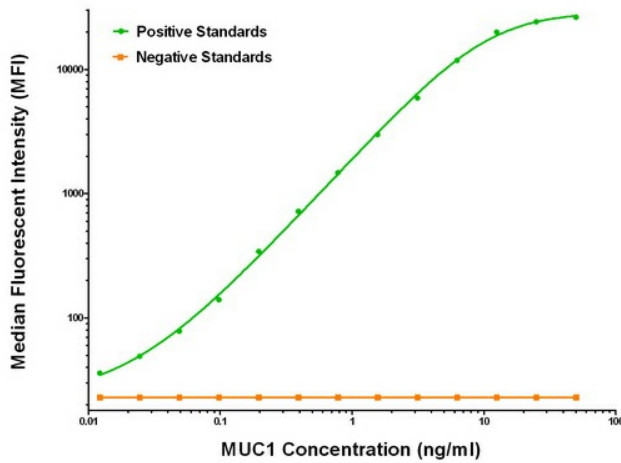
MUC1 ELISA with 1F3 Capture ([TA600445]) and 2E3 Detection (TA700445) Antibodies. Substrate used: Recombinant Human MUC1 ([TP321390])



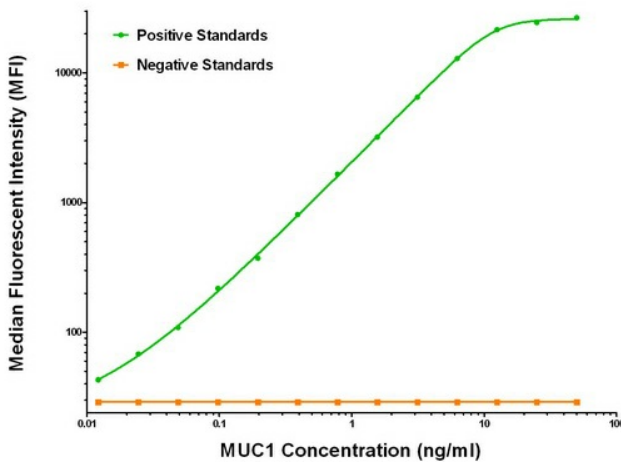
MUC1 ELISA with 2A5 Capture ([TA600446]) and 2E3 Detection (TA700445) Antibodies. Substrate used: Recombinant Human MUC1 ([TP321390])



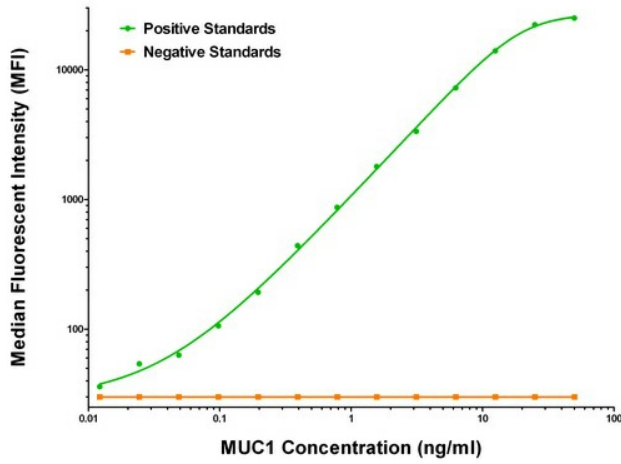
MUC1 ELISA with 4A5 Capture ([TA600447]) and 2E3 Detection (TA700445) Antibodies. Substrate used: Recombinant Human MUC1 ([TP321390])



MUC1 Luminex ELISA with 1F3 Capture ([TA600445]) and 2E3 Detection (TA700445) Antibodies. Substrate used: Recombinant Human MUC1 ([TP321390])



MUC1 Luminex ELISA with 2A5 Capture ([TA600446]) and 2E3 Detection (TA700445) Antibodies. Substrate used: Recombinant Human MUC1 ([TP321390])



MUC1 Luminex ELISA with 4A5 Capture ([TA600447]) and 2E3 Detection (TA700445) Antibodies. Substrate used: Recombinant Human MUC1 ([TP321390])