

## Product datasheet for **TA700443**

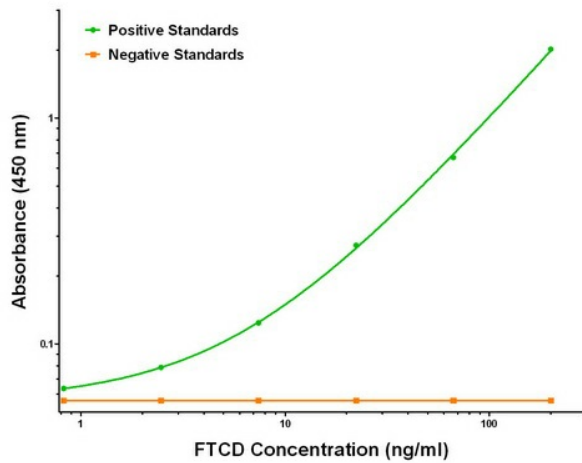
### **FTCD Biotinylated Mouse Monoclonal Detection Antibody (Biotin conjugated) [Clone ID: OTI8F12]**

#### **Product data:**

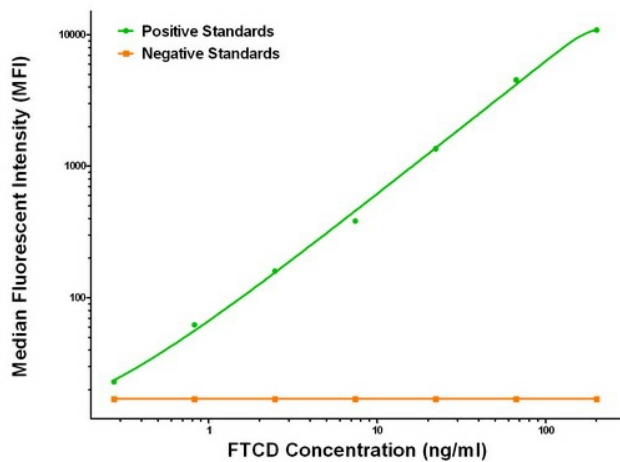
Product Type:	Primary Antibodies
Clone Name:	OTI8F12
Applications:	ELISA, LMNX
Recommended Dilution:	1:250 - 1:1000
Reactivity:	Human
Host:	Mouse
Isotype:	IgG1
Clonality:	Monoclonal
Immunogen:	Full length human recombinant protein of human FTCD (NM_006657) produced in HEK293T cell.
Formulation:	Stored in PBS (pH 7.4) with 0.05% sodium azide, 10mg/ml BSA, 50% glycerol
Concentration:	0.5 mg/ml
Conjugation:	Biotin
Storage:	Store at -20°C as received.
Stability:	Stable for 12 months from date of receipt.
Gene Name:	formimidoyltransferase cyclodeaminase
Database Link:	<a href="#">NP_006648</a> <a href="#">Entrez Gene 10841 Human</a> <a href="#">O95954</a>
Synonyms:	LCHC1
Matched ELISA Pair:	TA600443, TA600444
Protein Pathways:	Histidine metabolism, Metabolic pathways, One carbon pool by folate

[View online »](#)

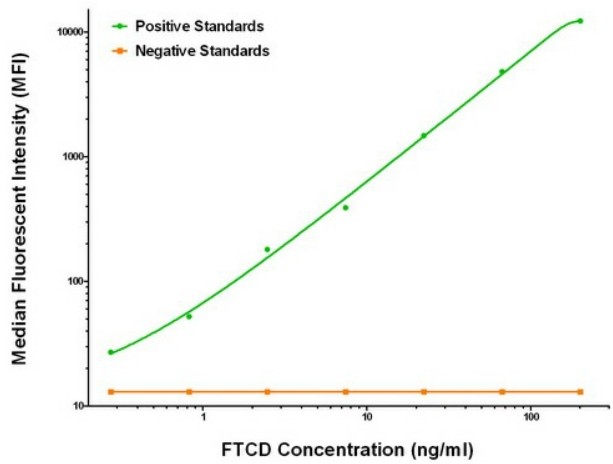
## Product images:



FTCD ELISA with 4A7 Capture ([TA600443]) and 8F12 Detection (TA700443) Antibodies. Substrate used: Recombinant Human FTCD ([TP308573])



FTCD Luminex ELISA with 4A7 Capture ([TA600443]) and 8F12 Detection (TA700443) Antibodies. Substrate used: Recombinant Human FTCD ([TP308573])



FTCD Luminex ELISA with 8C2 Capture ([TA600444]) and 8F12 Detection (TA700443) Antibodies. Substrate used: Recombinant Human FTCD ([TP308573])