

Product datasheet for **TA700441**

PADI4 Biotinylated Mouse Monoclonal Detection Antibody (Biotin conjugated) [Clone ID: OTI4H5]

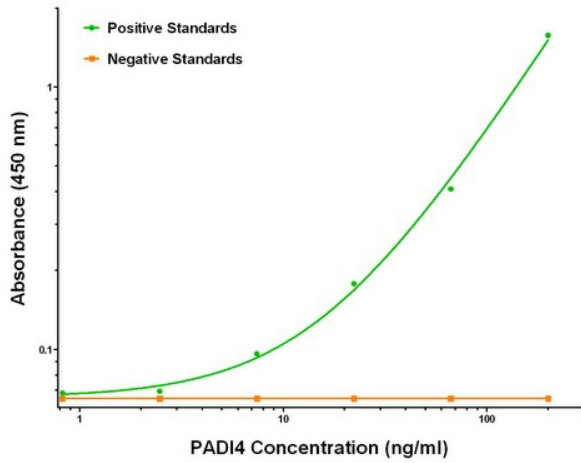
Product data:

Product Type:	Primary Antibodies
Clone Name:	OTI4H5
Applications:	ELISA, LMNX
Recommended Dilution:	1:250 - 1:1000
Reactivity:	Human
Host:	Mouse
Isotype:	IgG1
Clonality:	Monoclonal
Immunogen:	Full length human recombinant protein of human PADI4 (NM_012387) produced in HEK293T cell.
Formulation:	Stored in PBS (pH 7.4) with 0.05% sodium azide, 10mg/ml BSA, 50% glycerol
Concentration:	0.5 mg/ml
Conjugation:	Biotin
Storage:	Store at -20°C as received.
Stability:	Stable for 12 months from date of receipt.
Gene Name:	peptidyl arginine deiminase 4
Database Link:	NP_036519 Entrez Gene 23569 Human Q9UM07
Synonyms:	PAD; PAD4; PADI5; PDI4; PDI5
Matched ELISA Pair:	TA600442

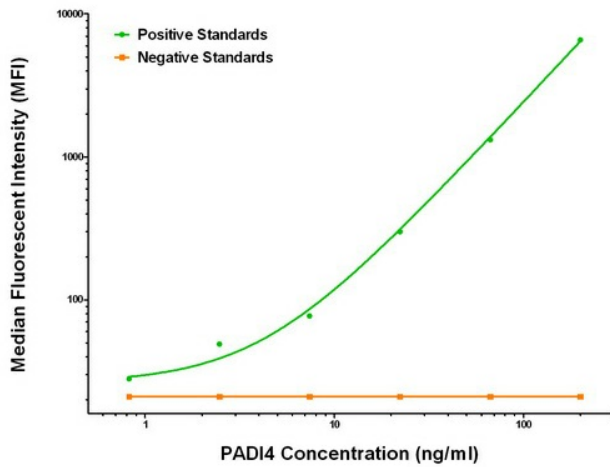


[View online »](#)

Product images:



PADI4 ELISA with 5E7 Capture ([TA600442]) and 4H5 Detection (TA700441) Antibodies. Substrate used: Recombinant Human PADI4 ([TP306501])



PADI4 Luminex ELISA with 5E7 Capture ([TA600442]) and 4H5 Detection (TA700441) Antibodies. Substrate used: Recombinant Human PADI4 ([TP306501])