

Product datasheet for **TA700436**

Epoxide hydrolase (EPHX1) Biotinylated Mouse Monoclonal Detection Antibody (Biotin conjugated) [Clone ID: OTI3F10]

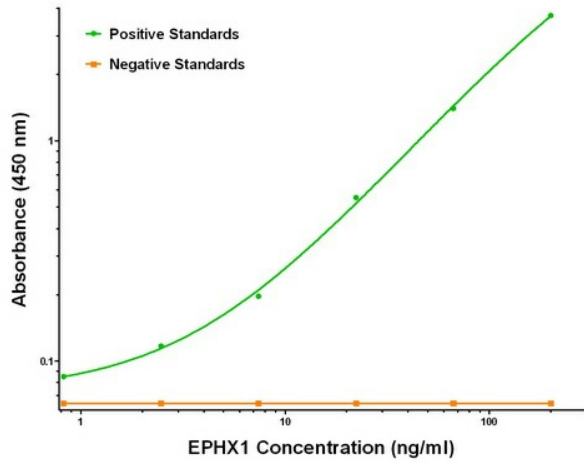
Product data:

Product Type:	Primary Antibodies
Clone Name:	OTI3F10
Applications:	ELISA, LMNX
Recommended Dilution:	1:250 - 1:1000
Reactivity:	Human
Host:	Mouse
Isotype:	IgG1
Clonality:	Monoclonal
Immunogen:	Full length human recombinant protein of human EPHX1 (NM_000120) produced in HEK293T cell.
Formulation:	Stored in PBS (pH 7.4) with 0.05% sodium azide, 10mg/ml BSA, 50% glycerol
Concentration:	0.5 mg/ml
Conjugation:	Biotin
Storage:	Store at -20°C as received.
Stability:	Stable for 12 months from date of receipt.
Gene Name:	epoxide hydrolase 1
Database Link:	NP_000111 Entrez Gene 2052 Human P07099
Synonyms:	EPHX; EPOX; HYL1; MEH
Matched ELISA Pair:	TA600436
Protein Families:	Druggable Genome, Protease
Protein Pathways:	Metabolism of xenobiotics by cytochrome P450

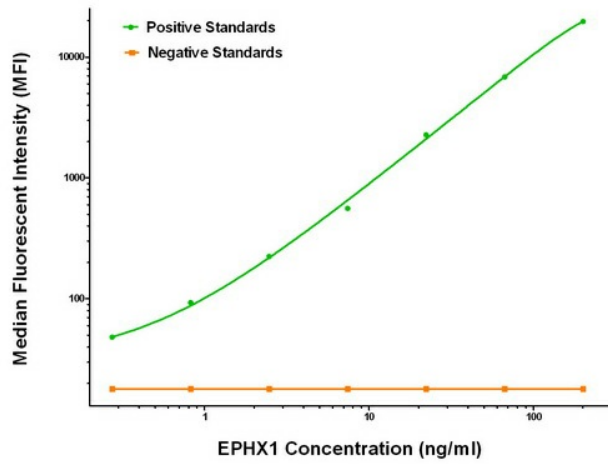


[View online »](#)

Product images:



EPHX1 ELISA with 2D8 Capture ([TA600436]) and 3F10 Detection (TA700436) Antibodies. Substrate used: Recombinant Human EPHX1 ([TP300621])



EPHX1 Luminex ELISA with 2D8 Capture ([TA600436]) and 3F10 Detection (TA700436) Antibodies. Substrate used: Recombinant Human EPHX1 ([TP300621])