

Product datasheet for **TA700430**

HDAC10 Biotinylated Mouse Monoclonal Detection Antibody (Biotin conjugated) [Clone ID: OT15A1]

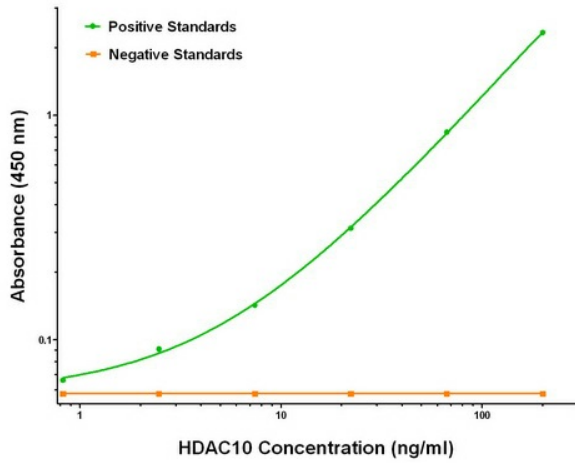
Product data:

Product Type:	Primary Antibodies
Clone Name:	OT15A1
Applications:	ELISA, LMNX
Recommended Dilution:	1:250 - 1:1000
Reactivity:	Human
Host:	Mouse
Isotype:	IgG1
Clonality:	Monoclonal
Immunogen:	Full length human recombinant protein of human HDAC10 (NM_032019) produced in HEK293T cell.
Formulation:	Stored in PBS (pH 7.4) with 0.05% sodium azide, 10mg/ml BSA, 50% glycerol
Concentration:	0.5 mg/ml
Conjugation:	Biotin
Storage:	Store at -20°C as received.
Stability:	Stable for 12 months from date of receipt.
Gene Name:	histone deacetylase 10
Database Link:	NP_114408 Entrez Gene 83933 Human Q969S8
Synonyms:	HD10
Matched ELISA Pair:	TA600430
Protein Families:	Druggable Genome, Transcription Factors

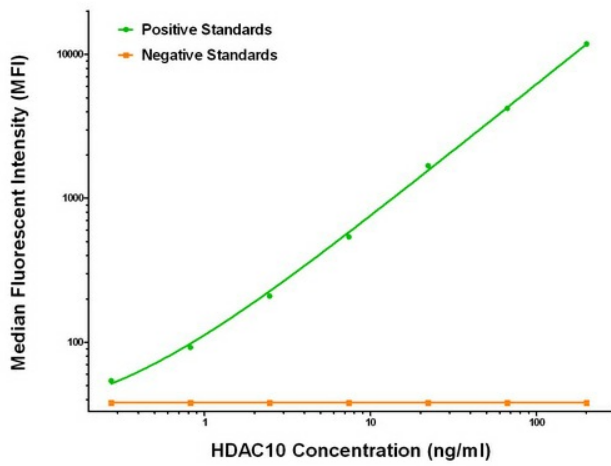


[View online »](#)

Product images:



HDAC10 ELISA with 6G5 Capture ([TA600430]) and 5A1 Detection (TA700430) Antibodies. Substrate used: Recombinant Human HDAC10 ([TP318536])



HDAC10 Luminex ELISA with 6G5 Capture ([TA600430]) and 5A1 Detection (TA700430) Antibodies. Substrate used: Recombinant Human HDAC10 ([TP318536])