

Product datasheet for **TA700426**

OTUB1 Biotinylated Mouse Monoclonal Detection Antibody (Biotin conjugated) [Clone ID: OTI5F6]

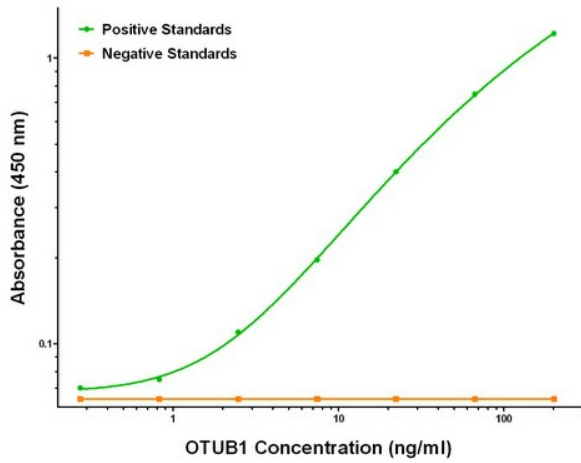
Product data:

| | |
|-----------------------|---|
| Product Type: | Primary Antibodies |
| Clone Name: | OTI5F6 |
| Applications: | ELISA, LMNX |
| Recommended Dilution: | 1:250 - 1:1000 |
| Reactivity: | Human, Rat |
| Host: | Mouse |
| Isotype: | IgG1 |
| Clonality: | Monoclonal |
| Immunogen: | Full length human recombinant protein of human OTUB1 (NM_017670) produced in HEK293T cell. |
| Formulation: | Stored in PBS (pH 7.4) with 0.05% sodium azide, 10mg/ml BSA, 50% glycerol |
| Concentration: | 0.5 mg/ml |
| Conjugation: | Biotin |
| Storage: | Store at -20°C as received. |
| Stability: | Stable for 12 months from date of receipt. |
| Gene Name: | OTU deubiquitinase, ubiquitin aldehyde binding 1 |
| Database Link: | NP_060140 Entrez Gene 293705 Rat Entrez Gene 55611 Human Q96FW1 |
| Synonyms: | HSPC263; OTB1; OTU1 |
| Matched ELISA Pair: | TA600426 |
| Protein Families: | Protease |

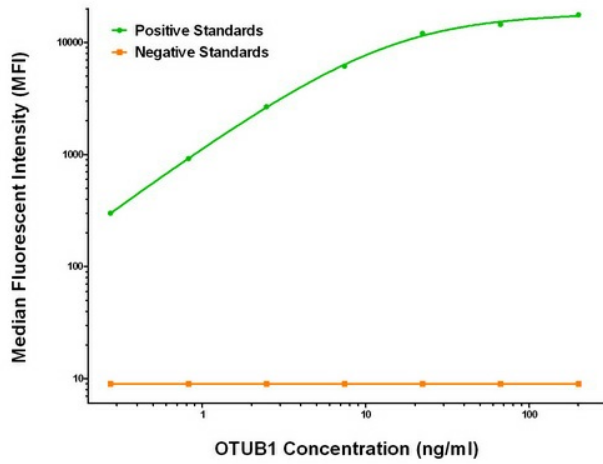


[View online »](#)

Product images:



OTUB1 ELISA with 2H1 Capture ([TA600426]) and 5F6 Detection (TA700426) Antibodies. Substrate used: Recombinant Human OTUB1 ([TP310648])



OTUB1 Luminex ELISA with 2H1 Capture ([TA600426]) and 5F6 Detection (TA700426) Antibodies. Substrate used: Recombinant Human OTUB1 ([TP310648])