

## Product datasheet for **TA700424**

### **OTUB1 Biotinylated Mouse Monoclonal Detection Antibody (Biotin conjugated) [Clone ID: OTI2H1]**

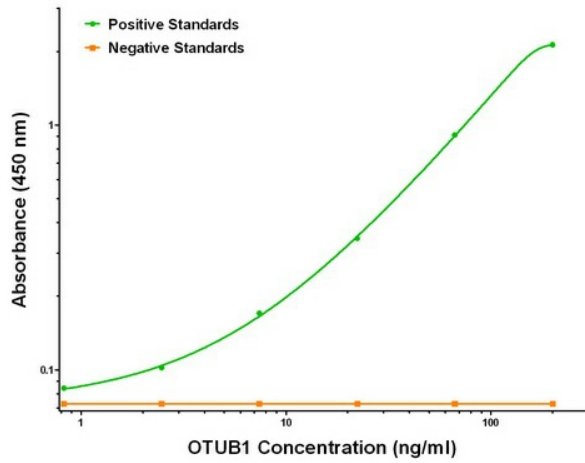
#### Product data:

Product Type:	Primary Antibodies
Clone Name:	OTI2H1
Applications:	ELISA, LMNX
Recommended Dilution:	1:250 - 1:1000
Reactivity:	Human, Rat
Host:	Mouse
Isotype:	IgG1
Clonality:	Monoclonal
Immunogen:	Full length human recombinant protein of human OTUB1 (NM_017670) produced in HEK293T cell.
Formulation:	Stored in PBS (pH 7.4) with 0.05% sodium azide, 10mg/ml BSA, 50% glycerol
Concentration:	0.5 mg/ml
Conjugation:	Biotin
Storage:	Store at -20°C as received.
Stability:	Stable for 12 months from date of receipt.
Gene Name:	OTU deubiquitinase, ubiquitin aldehyde binding 1
Database Link:	<a href="#">NP_060140</a> <a href="#">Entrez Gene 293705 Rat</a> <a href="#">Entrez Gene 55611 Human</a> <a href="#">Q96FW1</a>
Synonyms:	HSPC263; OTB1; OTU1
Matched ELISA Pair:	TA600424
Protein Families:	Protease

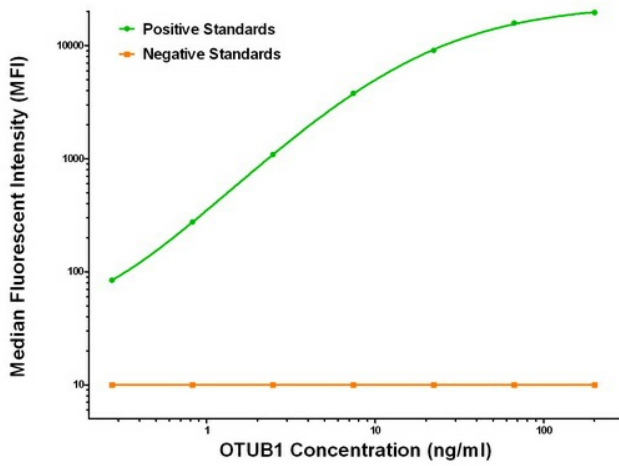


[View online »](#)

**Product images:**



OTUB1 ELISA with 1A6 Capture ([TA600424]) and 2H1 Detection (TA700424) Antibodies. Substrate used: Recombinant Human OTUB1 ([TP310648])



OTUB1 Luminex ELISA with 1A6 Capture ([TA600424]) and 2H1 Detection (TA700424) Antibodies. Substrate used: Recombinant Human OTUB1 ([TP310648])