

Product datasheet for **TA700418**

PIK3AP1 Biotinylated Mouse Monoclonal Detection Antibody (Biotin conjugated) [Clone ID: OTI6H6]

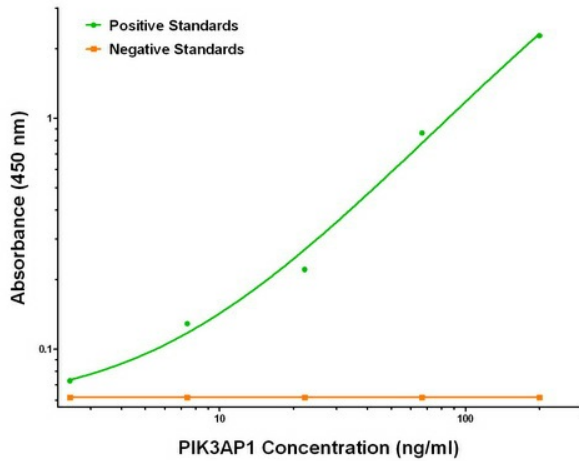
Product data:

Product Type:	Primary Antibodies
Clone Name:	OTI6H6
Applications:	ELISA, LMNX
Recommended Dilution:	1:250 - 1:1000
Reactivity:	Human, Mouse, Rat
Host:	Mouse
Isotype:	IgG1
Clonality:	Monoclonal
Immunogen:	Full length human recombinant protein of human PIK3AP1 (NM_152309) produced in HEK293T cell.
Formulation:	Stored in PBS (pH 7.4) with 0.05% sodium azide, 10mg/ml BSA, 50% glycerol
Concentration:	0.5 mg/ml
Conjugation:	Biotin
Storage:	Store at -20°C as received.
Stability:	Stable for 12 months from date of receipt.
Gene Name:	phosphoinositide-3-kinase adaptor protein 1
Database Link:	NP_689522 Entrez Gene 294048 RatEntrez Gene 118788 Human Q6ZUJ8
Synonyms:	BCAP
Matched ELISA Pair:	TA600418, TA600419, TA600420, TA600421, TA600423
Protein Families:	Druggable Genome
Protein Pathways:	B cell receptor signaling pathway

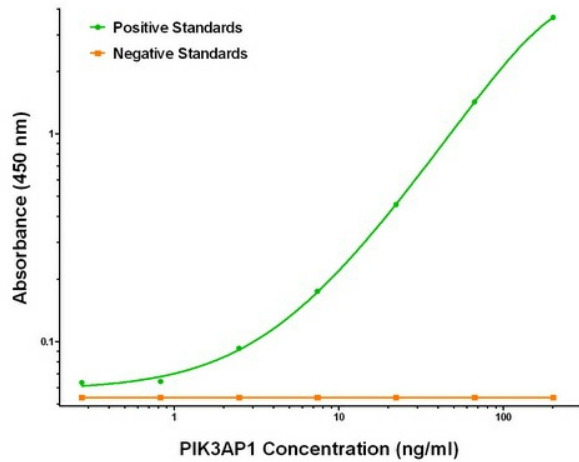


[View online »](#)

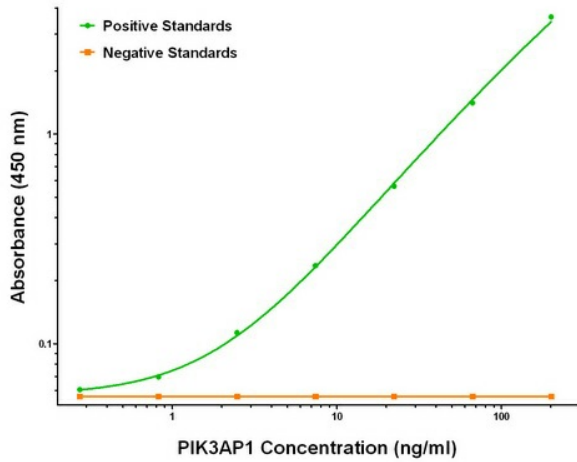
Product images:



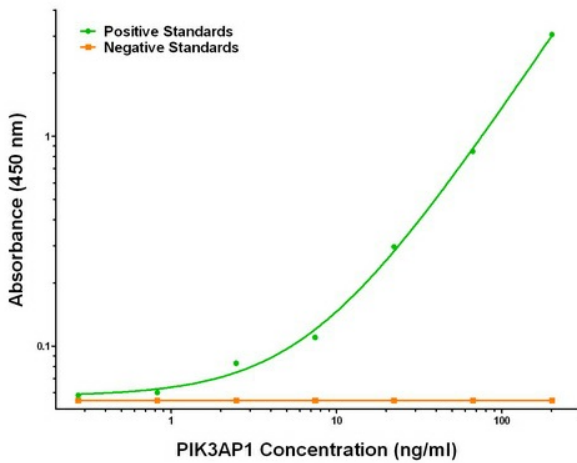
PIK3AP1 ELISA with 1C3 Capture ([TA600418]) and 6H6 Detection (TA700418) Antibodies. Substrate used: Recombinant Human PIK3AP1 ([TP314125])



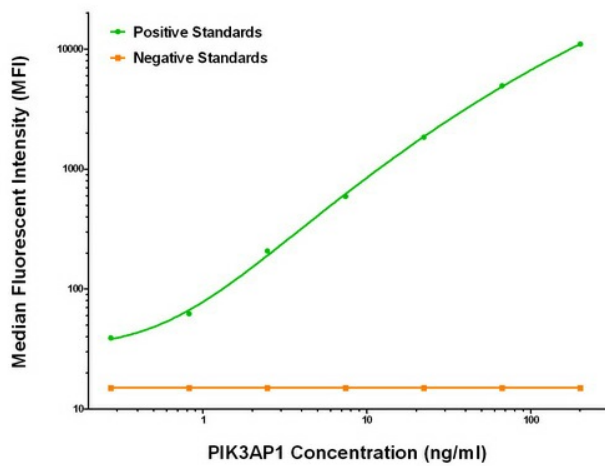
PIK3AP1 ELISA with 5A1 Capture ([TA600419]) and 6H6 Detection (TA700418) Antibodies. Substrate used: Recombinant Human PIK3AP1 ([TP314125])



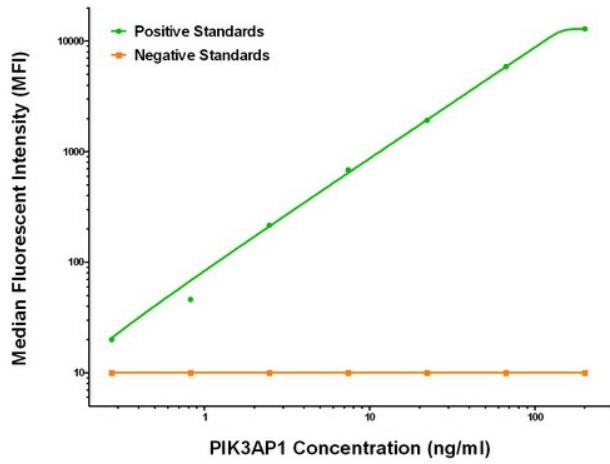
PIK3AP1 ELISA with 7A11 Capture ([TA600423]) and 6H6 Detection (TA700418) Antibodies. Substrate used: Recombinant Human PIK3AP1 ([TP314125])



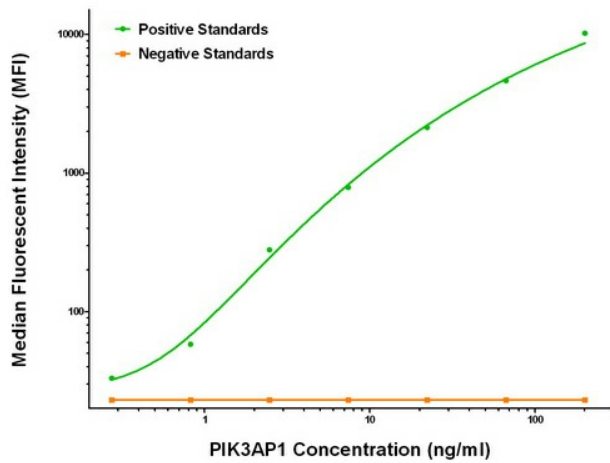
PIK3AP1 ELISA with 5H2 Capture ([TA600421]) and 6H6 Detection (TA700418) Antibodies. Substrate used: Recombinant Human PIK3AP1 ([TP314125])



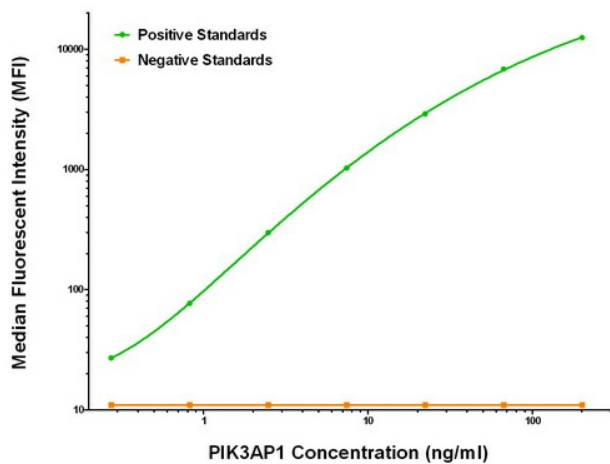
PIK3AP1 Luminex ELISA with 1C3 Capture ([TA600418]) and 6H6 Detection (TA700418) Antibodies. Substrate used: Recombinant Human PIK3AP1 ([TP314125])



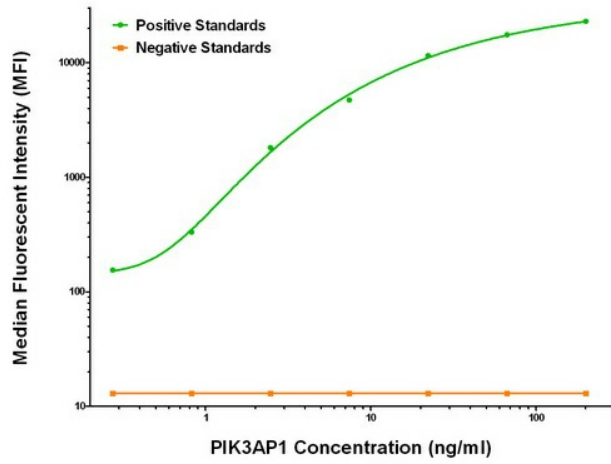
PIK3AP1 Luminex ELISA with 5A1 Capture ([TA600419]) and 6H6 Detection (TA700418) Antibodies. Substrate used: Recombinant Human PIK3AP1 ([TP314125])



PIK3AP1 Luminex ELISA with 5A5 Capture ([TA600420]) and 6H6 Detection (TA700418) Antibodies. Substrate used: Recombinant Human PIK3AP1 ([TP314125])



PIK3AP1 Luminex ELISA with 5H2 Capture ([TA600421]) and 6H6 Detection (TA700418) Antibodies. Substrate used: Recombinant Human PIK3AP1 ([TP314125])



PIK3AP1 Luminex ELISA with 7A11 Capture ([TA600423]) and 6H6 Detection (TA700418) Antibodies. Substrate used: Recombinant Human PIK3AP1 ([TP314125])