

Product datasheet for **TA700416**

RbAp46 (RBBP7) Biotinylated Mouse Monoclonal Detection Antibody (Biotin conjugated) **[Clone ID: OTI4C9]**

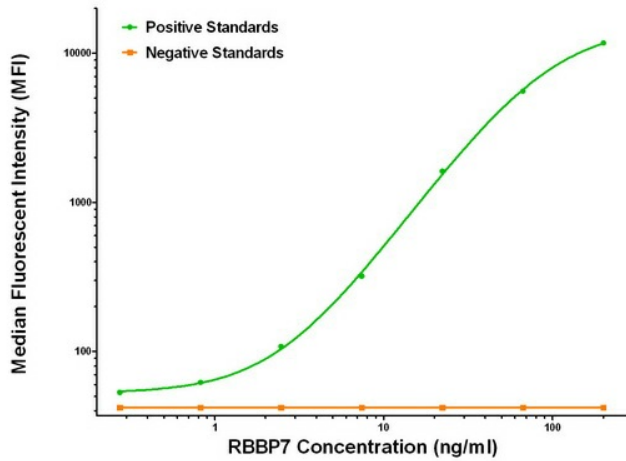
Product data:

Product Type:	Primary Antibodies
Clone Name:	OTI4C9
Applications:	LMNX
Recommended Dilution:	1:250 - 1:1000
Reactivity:	Human, Mouse, Rat
Host:	Mouse
Isotype:	IgG1
Clonality:	Monoclonal
Immunogen:	Full length human recombinant protein of human RBBP7 (NM_002893) produced in HEK293T cell.
Formulation:	Stored in PBS (pH 7.4) with 0.05% sodium azide, 10mg/ml BSA, 50% glycerol
Concentration:	0.5 mg/ml
Conjugation:	Biotin
Storage:	Store at -20°C as received.
Stability:	Stable for 12 months from date of receipt.
Gene Name:	RB binding protein 7, chromatin remodeling factor
Database Link:	NP_002884 Entrez Gene 83712 RatEntrez Gene 245688 MouseEntrez Gene 5931 Human Q16576
Synonyms:	RbAp46
Matched ELISA Pair:	TA600050
Protein Families:	Druggable Genome



[View online »](#)

Product images:



RBBP7 Luminex ELISA with Anti-Tag 1B12 Capture ([TA600050]) and 4C9 Detection (TA700416) Antibodies. Substrate used: Recombinant Human RBBP7 ([TP317969])