

## Product datasheet for **TA700413**

### **Ephrin A2 (EFNA2) Biotinylated Mouse Monoclonal Detection Antibody (Biotin conjugated)** **[Clone ID: OTI2C6]**

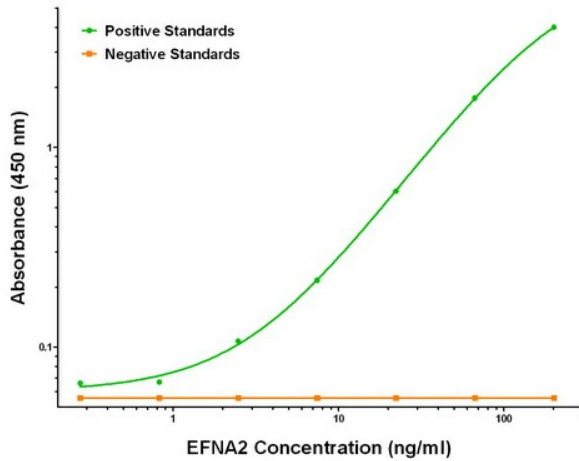
#### **Product data:**

|                       |   |
|-----------------------|---|
| Product Type:         | Primary Antibodies  |
| Clone Name:           | OTI2C6  |
| Applications:         | ELISA   |
| Recommended Dilution: | ELISA 1:250-1:1000  |
| Reactivity:           | Human, Mouse, Rat   |
| Host:                 | Mouse   |
| Isotype:              | IgG1  |
| Clonality:            | Monoclonal  |
| Immunogen:            | Full length human recombinant protein of human EFNA2 (NM_001405) produced in HEK293T cell.  |
| Formulation:          | Stored in PBS (pH 7.4) with 0.05% sodium azide, 10mg/ml BSA, 50% glycerol   |
| Concentration:        | 0.5 mg/ml   |
| Conjugation:          | Biotin  |
| Storage:              | Store at -20°C as received.   |
| Stability:            | Stable for 12 months from date of receipt.  |
| Gene Name:            | ephrin A2   |
| Database Link:        | <a href="#">NP_001396</a><br><a href="#">Entrez Gene 13637 Mouse</a> <a href="#">Entrez Gene 1943 Human</a><br><a href="#">O43921</a> |
| Synonyms:             | ELF-1; EPLG6; HEK7-L; LERK-6; LERK6   |
| Matched ELISA Pair:   | TA600413  |
| Protein Families:     | Druggable Genome  |
| Protein Pathways:     | Axon guidance   |

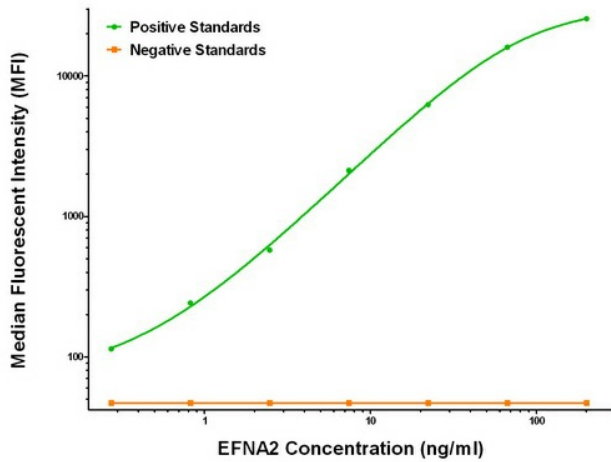


[View online »](#)

**Product images:**



EFNA2 ELISA with 2B7 Capture ([TA600413]) and 2C6 Detection (TA700413) Antibodies. Substrate used: Recombinant Human EFNA2 ([TP313728])



EFNA2 Luminex ELISA with 2B7 Capture ([TA600413]) and 2C6 Detection (TA700413) Antibodies. Substrate used: Recombinant Human EFNA2 ([TP313728])